

# CCAA

**Central California Adjusters Association**

## **2026 Fresno Claims Directory**



**Celebrating  
77 Years  
of Service  
1949 - 2026**

**[www.ccaa-fresno.com](http://www.ccaa-fresno.com)**

lic# 911672

# Building For A Better Future



**YANEZ**  
CONSTRUCTION

**Specializing in:**

**Commercial**

**Industrial**

**Large Loss Reconstruction**

**New Community Builds**

Your Construction Journey Made Easy and Transparent –  
Where Friendly Service Meets Expert Precision, Turning Your  
Vision into Reality

[www.yanezconstruction.com](http://www.yanezconstruction.com)

[info@yanezconstruction.com](mailto:info@yanezconstruction.com)

**Call (559) 638-6644**

# TABLE OF CONTENTS

2037 W. Bullard Ave., PMB #246 • Fresno, CA 93711  
www.ccaa-fresno.com

Introduction .....	3
Board Officers .....	5
Board of Directors .....	7
Past Presidents .....	9
Committees .....	13
Schedule of Events .....	15
Alphabetical Roster of Attorneys .....	17
City Offices .....	23
County Departments (Fresno, Kern, Kings, Madera, Mariposa, Merced, Stanislaus, Tulare and Tuolumne Counties).....	32
California State Offices .....	38
U.S. Government Offices .....	40
California Highway Patrol Offices .....	41
Area Hospitals .....	44
Anatomical Terms .....	47
Residential Construction .....	52
How to Estimate Wallpaper .....	53
Table of Weight and Measure .....	54
Mathematical Formulas .....	59
Braking/Stopping Distance Chart .....	60
Quick Reference Guide .....	61
Index to Advertisers .....	64
Calendar .....	65

# **OLSEN CONSTRUCTION**

## **RESTORATION**

**LICENSE NO. 502334**



Specializing In

## **FIRE, WATER, AND SMOKE DAMAGE**

- SAME DAY BOARD-UPS
- DEBRIS REMOVAL
- SMOKE ODOR REMOVAL
- COMPLETE RESTORATION & PACKOUT SERVICES
- VIDEO DOCUMENTATION
- FLOOD RESTORATION SERVICES
- WATER EXTRACTION & DRYING
- INFARED CAMERA INSPECTION



**DKI**



**INSURANCE CLAIM SPECIALISTS  
24 HOUR EMERGENCY SERVICE**

**266-FIRE (3473)**

**TOLL FREE 1-877-905-SOOT (7668)**

**FAX 233-0200**

2976 N. Argyle Ave., Fresno, CA 93727

[olsenconstructionandrestoration.com](http://olsenconstructionandrestoration.com)

email: [mike@olsencr.com](mailto:mike@olsencr.com) or [blair@olsencr.com](mailto:blair@olsencr.com)

# Central California Adjusters Association

The Central California Adjusters Association (CCAA) was founded in 1949. The founding fathers of the CCAA envisioned an association of insurance adjusters located throughout the Central Valley that could come together to share ideas, produce education programs, and develop relations within the community. Their goal was to combine strength and support from the insurance and legal industries to enable a successful association.

CCAA has adopted By-Laws that set forth, elected officers, and set in motion a long-range program to maintain the goals originally expressed.

The Association strives to offer enhanced professional education to its members and keep them abreast of any industry concerns. Each year, more enthusiasm and interest is shown as indicated by our increased attendance. We have educational meetings, annual association receptions, and a successful golf tournament each year.

On behalf of the Board Directors, we wish to thank each of you who have continually supported the Central California Adjusters Association.



**ON SITE IN LESS THAN AN HOUR**

**24 / 7 / 365**

**BOARD UP, TARPING, STABILIZATION,  
TEMP FENCING IN STOCK ON SITE UPON  
ARRIVAL**

**SPECIALLY TRAINED TO PROTECT YOUR SCENE**

**XACTIMATE PRICING**

**COMPASSIONATE VICTIM'S  
ASSISTANCE.**

**NIMMS CERTIFICATIONS**

**1-800-BOARDUP®**

**Securing Buildings • Protecting People • Minimizing Damage**



# CCAA

2037 W. Bullard Ave., PMB #246 • Fresno, CA 93711  
www.ccaa-fresno.com

## — BOARD OFFICERS — 2026



**PRESIDENT**  
**STEPHANIE LANDRETH**  
EPIC BROKERS CLAIMS  
TELEPHONE 925-244-7784



**VICE PRESIDENT**  
**MARK OLSON**  
CRAWFORD & COMPANY  
TELEPHONE 559-288-6842



**SECRETARY**  
**KEN WILKERSON**  
RETIRED  
TELEPHONE 289-5474



**TREASURER**  
**MIKE LOUGHNEY**  
OLSEN CONSTRUCTION  
TELEPHONE 266-3473

---



**ALM**  
**ENVIRONMENTAL**  
A S B E S T O S   L E A D   M O L D

---



**Asbestos Abatement-Lead Removal-Mold  
Remediation-Non-Hazardous Demolition-Floor  
Scraping**

*“ALM Environmental is proud to serve our community and keep the  
people of the Central Valley healthy.”*

*Richard Swisegood, Owner*

**1225 Barstow Ave Clovis, CA 93612**

**559-288-0377**

**[alm@almenvironmentalca.com](mailto:alm@almenvironmentalca.com)**

# CCAA

2037 W. Bullard Ave., PMB #246 • Fresno, CA 93711  
www.ccaa-fresno.com

## — BOARD OF DIRECTORS — 2026



**MIKE FLORES**  
CENTRAL VALLEY ENVIRONMENTAL  
TELEPHONE 559-978-7276



**ABEL ULLOA**  
ELITE RESTORATION  
TELEPHONE 559-972-4460



**FRANK MARTINEZ**  
EPIC BROKERS CLAIMS MANAGER  
TELEPHONE 451-3212



**MIKE PURSELL**  
RETIRED  
TELEPHONE 559-970-2044



**BREANA LANDRETH**  
EPIC INSURANCE BROKERS  
TELEPHONE 559-451-3218



**SCOTT HANNAFORD**  
HANNAFORD CLAIMS SERVICE  
TELEPHONE 559-281-8232



*Cleaning and Restoration of Clothing  
and Household Items After:*

Fire  Smoke  Water  Mold







**(877) 835-1005**

[www.GarmentRestoration.net](http://www.GarmentRestoration.net)



Offering Restoration of Appliances and  
Electronics Due to Smoke, Water and  
Mold Damage Including:

-  Detach and Reset Services
-  Cleaning & Decontamination
-  Testing
-  Data Recovery & Back-Up

[Info@ElectronicsRestoration.net](mailto:Info@ElectronicsRestoration.net)

[www.ElectronicsRestoration.net](http://www.ElectronicsRestoration.net)

**(559) 797-7955**

DAMAGE & EVALUATION APPRAISING OF AUTOMOBILES, TRUCKS,  
HEAVY EQUIPMENT, FARM MACHINERY & BOATS

**W**  
**A**

**WESTERN APPRAISERS**  
OF FRESNO

P.O. BOX 27428  
FRESNO, CA 93729-7428

**W**  
**C**

**WESTERN CLAIMS ADJUSTERS**

A DIVISION OF WESTERN APPRAISERS OF FRESNO

MEMBER OF NATIONAL TRUCK HEAVY  
EQUIPMENT CLAIMS COUNSEL  
(NTHECC)

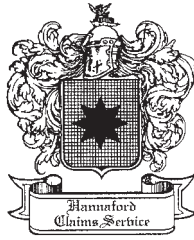
ED. FERNANDES  
OWNER

P.O. BOX 27428  
FRESNO, CA 93729-7428

(559) 299-9241  
FAX (559) 299-0669

**CCAA**  
**—PAST PRESIDENTS—**

2025	— Frank Martinez	.....	Epic Brokers
2024	— Frank Martinez	.....	Epic Brokers
2023	— John Dufer	.....	Renaissance Construction
2022	— John Dufer	.....	Renaissance Construction
2021	— Stephanie Landreth	.....	Epic Brokers
2020	— Stephanie Landreth	.....	Epic Brokers
2019	— Stephanie Landreth	.....	Epic Brokers
2018	— Mark Olson	.....	Crawford & Company
2017	— Paul Blanchard	.....	Allianz
2016	— Frank Martinez	.....	Epic Brokers
2015	— Frank Martinez	.....	Epic Brokers
2014	— Scott Hannaford	.....	Hannaford Claims Services
2013	— Scott Hannaford	.....	Hannaford Claims Services
2012	— Scott Hannaford	.....	Hannaford Claims Services
2011	— Lorey Allen	.....	United Valley Insurance
2010	— John Manning	.....	Dibuduo & Defendis
2009	— John Manning	.....	Dibuduo & Defendis
2008	— Mark Burger	.....	Broadspire
2007	— Paul Blanchard	.....	Allianz
2006	— Maria Rocca	.....	Farmers Insurance Group
2005	— Paul Blanchard	.....	Allianz
2004	— Sharon Tovar-Davis	.....	—
2003	— Sharon Tovar-Davis	.....	—
2002	— Charles Hamm	.....	Deceased
2001	— Mark Burger	.....	Broadspire
2000	— Steve Wakefield	.....	Deceased
1999	— John D. Smith	.....	Retired
1998	— Bob Pereira	.....	CSAA
1997	— Sue Lopez	.....	Allstate Insurance
1996	— Steve Appleby	.....	Appleby & Co.
1995	— Linda Gilmour	.....	—
1994	— Linda Gilmour	.....	—
1993	— Lola Hogan	.....	Sequoia Insurance
1992	— Kerry Trost	.....	—
1991	— Kerry Trost	.....	—
1990	— Fred Vertiz	.....	Retired
1989	— Steve Appleby	.....	Appleby & Co.
1988	— Harold Thomas	.....	Oliver, Thomas, Caeton, Pierce & Patty
1987	— Diane Crowder	.....	Deceased
1986	— Jeff Krebs	.....	Deceased
1985	— Ken Wilkerson	.....	AIMS
1984	— Bob Zimmerman	.....	Deceased
1983	— Louie M. Rodriquez	.....	—
1982	— Dan Burns	.....	Retired
1981	— Don Boyce	.....	Deceased
1980	— Steve Arcia	.....	Retired
1979	— Virgil Anderson	.....	Commodore Insurance Services
1978	— Wally Landis	.....	Retired
1977	— Rudy Liebl	.....	Retired
1976	— Jim Davison	.....	Retired
1975	— Lester Potthast	.....	Deceased



## HANNAFORD CLAIMS SERVICE

Scott Hannaford, CPCU

*Owner, Adjuster, Specializing in Property  
Multi-Line Adjuster Since 1977*

*Territory includes Bakersfield to Modesto*

CA License #2C66060

2037 West Bullard Avenue, #234  
Fresno, California 93711

EMAIL:  
HANNAFORDCLAIMS@GMAIL.COM

PHONE:  
**559-281-8232**  
FAX: 559-449-1020



## RESTORE TECH INCORPORATED

3807 W. Swift Ave.  
Fresno Ca. 93722

**(559) 412-4535 / (805) 242-6171**

Serving Fresno, San Luis Obispo,  
and surrounding areas.



Water



Mold



Fire



Construction

1974 — Raymond J. Fimbres, Jr.	Deceased
1973 — Eddie Fernandes	Deceased
1972 — Tom Monahan	Deceased
1971 — Dick Pearson	Retired
1970 — Fred W. Spears	Deceased
1969 — John Tolson	Retired
1968 — Red Blevins	Deceased
1967 — Dick Bunker	Retired
1966 — Ted Oliver	Deceased
1965 — Dick Gallup	Deceased
1964 — Goldie Long	Deceased
1963 — Ted Coopman	Deceased
1962 — Frank Connors	Deceased
1961 — Pete Eldridge	Deceased
1960 — Harold Jones	Deceased
1959 — Kelly Smith	—
1958 — Jim Appleby	Deceased
1957 — Ted Slinkard	Deceased
1956 — Bob Buckalew	Deceased
1955 — Vern Neufeld	Deceased
1954 — Harold Cox	Deceased
1953 — Tom Lanigan	Deceased
1952 — Barr Shelton	Deceased

—LIFE MEMBERS—

Scott Hannaford	Hannaford Claim Service
Paul Blanchard	Allianz
Mark Burger	Broadspire
Mike Pursell	Retired
Steve Wakefield	Deceased
Jeff Krebs	Deceased
Ken Wilkerson	Aims
Jim Appleby	Retired
Harold Jones	Retired
Steve Appleby	Appleby & Co.
Goldie Long	Deceased
Jerry Beeler	Deceased
George Schroeder	Deceased
Don Burson	Retired
Robert J. Seller	Retired
Nick Draklich	Deceased
Barr Shelton	Deceased
Pete B. Eldridge	Deceased
John Steele	Retired
Dick Gallup	Deceased
Ted Oliver	Deceased
Don Gould	Retired
Burl Houck	Deceased
Etta Houck	Deceased
Dick Pearson	Retired
Burl Houck	Deceased
Etta Houck	Deceased
Dick Pearson	Retired



**Julio C. Alarcon**  
President

julio@paramountrac.com

# ***Paramount***

***Restoration and Construction***

## **FIRE**

- Fire Restoration
- Emergency Services
- Fire Damage Repairs

## **SMOKE**

- Smoke Mitigation
- Structural Stabilization
- Smoke Damage Repairs

## **WATER**

- Water Mitigation
- Mold Remediation
- Water Damage Repairs

**OFFICE:**

**559.519.6436**

**MOBILE:**

**559.860.8490**

**13174 Road 29 • Madera, CA 93638**

**Residential & Commercial**

Serving Fresno, Madera, & Tulare

**LIC.# 1023740**

# CCAA

2037 W. Bullard Ave., PMB #246 • Fresno, CA 93711  
www.ccaa-fresno.com

## —COMMITTEE CHAIRPERSONS FOR 2026—

### INSTALLATION

Ken Wilkerson – Retired

### EMPLOYMENT

Ken Wilkerson – Retired . . . . . 289-5474

### MEMBERSHIP

Frank Martinez – Epic Brokers . . . . . 451-3212

Scott Hannaford – Hannaford Claims Services . . . . . 281-8232

### DIRECTORY

Mike Loughney – Olsen Construction . . . . . 266-3473

Stephanie Landreth – Epic Brokers . . . . . 925-244-7784

Scott Hannaford – Hannaford Claims Services . . . . . 281-8232

### SOCIAL COMMITTEE/FACEBOOK

Mike Pursell – Retired . . . . . 970-2044

Breana Landreth – Epic Brokers . . . . . 925-244-7784

Stephanie Landreth – Epic Brokers . . . . . 925-244-7784

### GOLF

Scott Hannaford – Hannaford Claims Service . . . . . 281-8232

Mike Pursell – Retired . . . . . 970-2044

Stephanie Landreth – Epic Brokers . . . . . 925-244-7784

Mike Loughney – Olsen Construction . . . . . 266-3473

### SPRING FLING

Scott Hannaford – Hannaford Claims Services . . . . . 281-8232

Mike Pursell – Retired . . . . . 970-2044

Stephanie Landreth – Epic Brokers . . . . . 925-244-7784

Mike Flores – CVE . . . . . 978-7276

### CHARITABLE DONATIONS

Mark Olson – Crawford & Company . . . . . 288-6842

Abel Ulloa – Elite Restoration . . . . . 559-972-4460

### VENDOR APPRECIATION

Mike Loughney – Olsen Construction . . . . . 266-3473

Abel Ulloa – Elite Restoration . . . . . 559-972-4460

Mike Pursell – Retired . . . . . 970-2044

### SOCIAL MEDIA

Breana Landreth – Epic Brokers . . . . . 925-244-7784

Stephanie Landreth – Epic Brokers . . . . . 925-244-7784



# CVE

PROFESSIONAL  
ABATEMENT  
SOLUTIONS

**ASBESTOS ♦ LEAD ♦ MOLD ♦ DEMOLITION**

CENTRAL VALLEY ENVIRONMENTAL

DISABLED VETERAN  
**DVBE**  
BUSINESS ENTERPRISE



PROVIDING SERVICES  
THROUGHOUT THE  
WEST COAST



RESIDENTIAL



COMMERCIAL



INDUSTRIAL

GET THE  
CVE EXPERIENCE



**(559) 222-1122**

**CVECORP.COM**

# CCAA

2037 W. Bullard Ave., PMB #246 • Fresno, CA 93711  
www.ccaa-fresno.com

## 2026

### —SCHEDULE OF EVENTS— (Programs and Dates are subject to change)

January 22, 2026	MIXER
February 2026	NO MEETING
March 19, 2026 - Mama Iguana	MIXER
April 2026	NO MEETING
May 15, 2026	SPRING FLING
June 2026	NO MEETING
July 17, 2026	MIXER
August 2026	NO MEETING
September 11, 2026	GOLF TOURNAMENT/DINNER - DRAGONFLY
October 16, 2026	VENDOR APPRECIATION NIGHT
November 2026	NO MEETING
December 11, 2026	CHRISTMAS LUNCHEON Election of Officers



For over 25 years, Alliance Environmental has been a leader and trusted partner for environmental remediation and indoor air quality services. Our highly trained and certified technicians are committed to providing exceptional customer service while delivering quality workmanship.



## YOUR SINGLE SOURCE SOLUTION FOR ENVIRONMENTAL & INDOOR AIR QUALITY SERVICES



### ENVIRONMENTAL

- Asbestos & Lead Abatement
- Mold Remediation
- Hazardous Material Cleanup & Waste Removal
- Containment Barriers
- Heat Treatment
- Contents (Total Loss Inventory)

### BIOHAZARD

- Trauma Scene Cleanup
- Illegal Drug Cleanup
- Hoarding Cleanup
- COVID-19 Decontamination

### INDOOR AIR QUALITY & LIFE SAFETY

- HVAC Replacement & Installation
- HVAC Maintenance & Repair
- HVAC System & Duct Cleaning
- Infectious Disease Containment
- Fire Stopping
- Fire Damper Survey & Replacement
- Fire Sprinkler Head Cleaning

### CONSTRUCTION

- Insulation Removal & Replacement
- Demolition & Site Clearing

877-385-7515  
3505 W. GETTYSBURG | FRESNO, CA 93722  
ALLIANCE-ENVIRO.COM

**BREATHE  
CLEAN**

**ALPHABETICAL ROSTER OF ATTORNEYS**

**Cooper & Cooper**

5756 N. Marks Ave., #160, Fresno, CA 93711 . . . . . (559) 442-1650

**Ericksen & Arbuthnot**

2440 W. Shaw Ave., Ste. 101, Fresno CA 93711 . . . . . (559) 449-2600  
 . . . . . FAX (559) 449-2603

**Hager, Trippel, Macy & Jensen LLP**

1322 E. Shaw, Ste. 350, Fresno CA 93710 . . . . . (559) 228-8322  
 . . . . . FAX (559) 226-5274

**Hanna, Brophy, MacLean, McAleer & Jensen LLP**

1141 W. Shaw Ave., Fresno CA 93711 . . . . . (559) 435-9823  
 . . . . . FAX (559) 435-9098

**Helon & Manfredo LLP**

735 W. Alluvial Ave., Ste. 102, Fresno CA 93711 . . . . . (559) 226-4420  
 . . . . . FAX (559) 226-1524

**Hoppe Law Group**

680 W. Shaw Ave., Ste. 207, Fresno CA 93704 . . . . . (559) 241-7070  
 . . . . . FAX (559) 241-7212

**Jacobson Dispute Resolutions, Mediator**

246 W. Shaw Ave., Ste. 237, Fresno CA 93704 . . . . . (559) 448-0400  
 . . . . . FAX (559) 448-0123

**Litigation Engineered**

1300 E. Shaw, Ste. 125, Fresno CA 93710 . . . . . (559) 221-2771  
 . . . . . FAX (559) 221-2775

**McCormick Barstow LLP**

7647 N. Fresno St., P.O. Box 28912, Fresno CA 93729-8912 . . . . . (559) 433-1300  
 . . . . . FAX (559) 433-2300

**Mullen & Filippi**

575 E. Locust Ave, Fresno, CA 93720 . . . . . (559) 449-8170  
 . . . . . FAX (559) 449-8781

*(continued)*



**P.W. STEPHENS**  
ENVIRONMENTAL, INC.

**ASBESTOS  
ABATEMENT**

**LEAD-BASED  
PAINT**

**MOLD  
REMEDICATION**

**DUCT  
CLEANING**

**CRIME SCENE  
CLEAN UP**

**BED BUG  
ERADICATION**

*NOW SERVING ALL OF CALIFORNIA  
1-800-750-7733*

*THE MOST EXPERIENCED ABATEMENT CONTRACTOR ON THE WEST COAST*

CA-LICENSE #922790



**Packout & Inventory | Cleaning & Restoration**  
**Secure Storage & Move-Back**

- Total Loss Inventories
- Structure Cleaning
- Xactimate | ICAT | DocuSketch
- Ozone Chamber - Large Quantities
- Ultrasonic Cleaning - Hard/Soft Goods



**THE CONTENTS EXPERTS -**  
**We Care About What We Carry™**

**559-321-4343**  
**rick.rose@bkpackz.com**

**ALPHABETICAL ROSTER OF ATTORNEYS (cont'd)**

**DeMaria Law Firm**

1684 W. Shaw, Ste. 101, Fresno CA 93711 . . . . . (559) 206-2410  
. . . . . FAX (559) 570-0126

Email: [gmyers@demarialawfirm.com](mailto:gmyers@demarialawfirm.com)

**Nelson & Rozier**

100 Willow Plaza, Ste. 401, Visalia, CA 93291 . . . . . (559) 713-0159  
. . . . . FAX (559) 713-0166

[litigate@visalialawyers.com](mailto:litigate@visalialawyers.com)

**Parichan, Renberg & Crossman**

1540 E. Shaw Ave., Ste. 123, Fresno CA 93710 . . . . . (559) 431-6300  
. . . . . FAX (559) 432-1018

**Parker, Kern, Nard & Wenzel**

7112 N. Fresno St., #300, Fresno, CA 93720 . . . . . (559) 449-2558  
. . . . . FAX (559) 449-2564

[www.pknwlaw.com](http://www.pknwlaw.com)

**Peel, Garcia LLP**

3585 W. Beechwood, Ste. 101, Fresno CA 93711 . . . . . (559) 431-1300  
. . . . . FAX (559) 431-1442

**Quinlan, Kershaw & Fanucchi**

2125 Merced St., Fresno CA 93721-1878 . . . . . (559) 268-8771  
. . . . . FAX (559) 268-5701

[www.qkffirm.com](http://www.qkffirm.com)

**Stammer, McKnight, Barnum & Bailey LLP**

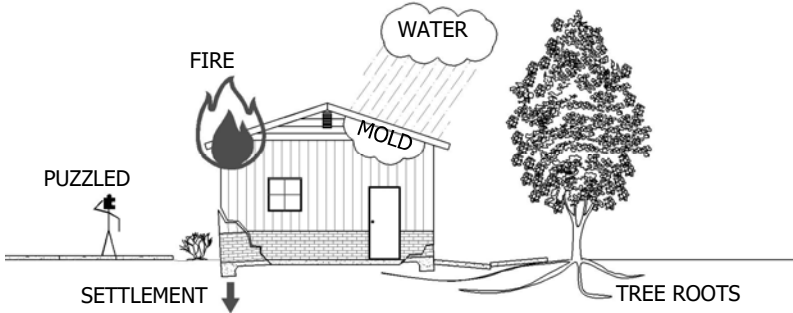
2540 W. Shaw Lane, Ste. 110, Fresno CA 93711-2766 . . . . . (559) 449-0571  
. . . . . FAX (559) 432-2619



# I-ENG-A<sup>®</sup> OF CENTRAL CALIFORNIA

A Division of **Pauli Engineering, Inc.**  
Consulting and Investigative Engineers

## INVESTIGATION AND INSPECTION SERVICES



- Cause and Origin Investigations
- Structural Assessments
- Water Damage/Mold origin
- Storm Damage Assessment
- Roofing Damage Investigation
- Construction Failures and Defects
- Tree Root Damage
- Fire and Arson Investigations
- Slip and Fall Analysis
- Litigation Support/Expert Witness
- Product Liability/Subrogation
- Evidence Removal and Storage

## ARCHITECTURE & ENGINEERING FULL DESIGN SERVICES



- Seismic Analysis/Retrofits
- Structural Repair Plans
- Architectural Design
- Construction Drawings
- Building Permit Processing
- ADA Code Compliance
- Grading & Drainage Plans
- Site Development & Design
- Code Upgrades

**Serving: Fresno, Madera, Kings, Kern, Tulare, Merced, Mariposa,  
San Benito, Monterey, Santa Cruz, and San Mateo County**

**559-237-4408**

2501 W. SHAW AVENUE SUITE 121, FRESNO, CA 93711

[www.pauliengineering.com](http://www.pauliengineering.com)

[admin@pauliengineering.com](mailto:admin@pauliengineering.com)



Member:  
Investigative Engineers Association ([www.ienga.com](http://www.ienga.com))  
American Concrete Institute

International Code Council  
American Society of Civil Engineers

**ALPHABETICAL ROSTER OF ATTORNEYS**

**Teresa B. Petty-Jones, Attorney at Law**

375 Woodworth Ave., Suite 104, Clovis, CA 93612 .....(559) 900-1194  
..... FAX (559) 765-4584  
www.tbpettylaw.com

**Weakley & Arendt LLP**

5200 N. Palm Ave., Ste. 211, Fresno, CA 93704 .....(559) 221-5256  
..... FAX (559) 221-5262  
James D. Weakley           jim@wrlaw.com  
Leslie M. Dillahunty       leslie@wrlaw.com  
James J. Arendt            james@wrlaw.com

**Wilkins, Drolshagen & Czeshinski LLP**

6785 N. Willow, Ste. 204, Fresno CA 93710 .....(559) 438-2390  
..... FAX (559) 438-2393  
wdcllp@wdcllp.com

**Yrulegui & Roberts**

2680 W. Shaw Ln., Fresno, CA 93711 .....(559) 222-0660  
..... FAX (559) 222-2880  
sroberts@rjylaw.com

# Patrick McCaleb

Senior Principal

Direct (559) 451-3190

Mobile (559) 259-4550

[patrick.mccaleb@epicbrokers.com](mailto:patrick.mccaleb@epicbrokers.com)

5250 North Palm Avenue, Suite 220, Fresno, CA 93704



Insurance Brokers & Consultants



## Leak Detection and Repair

- Cause & Duration
- Minimally Invasive Reroute Estimates
- 7 Day a Week
- Temporary Water Heaters & Sinks

### (916) 538-3568

[citywaterconservation@gmail.com](mailto:citywaterconservation@gmail.com)

[WWW.CITYWATERCONSERVATION.COM](http://www.CITYWATERCONSERVATION.COM)



Cleaning. Restoration. Construction.

Fire & Water - Cleanup & Restoration™

24/7 Emergency Service



SERVPRO of Clovis,  
Fresno Northeast,  
Shaver Lake,  
Visalia, & Redding



SERVPRO SERVICES  
RESIDENTIAL & COMMERCIAL

### RESTORATION:

- Water Restoration
- Fire, Smoke, and Soot
- Mold Remediation
- Commercial Services
- Trauma & Crime Scene Cleanup

### CLEANING:

- Bioremediation and Vandalism
- Ceilings, Walls, and Hard Floors
- COVID Cleanings
- Deodorization

Contact Aimee Schaaf:  
(559) 765-1100  
[aschaaf@servproclovis.com](mailto:aschaaf@servproclovis.com)

24-Hour Emergency  
Water Removal



IICRC  
CERTIFIED

## CITY OFFICES

### ALPAUGH

Fire Department  
3939 Center St.  
P.O. Box 40, 93201  
(559) 949-8343

### ARVIN

Police Department  
200 Campus Drive  
P.O. Box 156  
Arvin, 93203  
(661) 854-5583

Fire Department  
301 Campus Drive  
Arvin, 93203  
(661) 854-5517

### ATWATER

Police Department  
750 Bellevue Road, 95301  
(209) 357-6384  
[www.ci.atwater.ca.us](http://www.ci.atwater.ca.us)

Fire Department  
699 Broadway  
Atwater, 95301  
(209) 357-6354

### BAKERSFIELD

Fire Department  
1315 Buena Vista Blvd.  
(661) 326-3911  
[www.ci.bakersfield.ca.us](http://www.ci.bakersfield.ca.us)

Police Department  
1601 Truxtun Ave.  
P.O. Box 59, 93302  
Bakersfield  
(661) 327-7111

### CERES

Police Department  
2727 3rd Street, 95307  
(209) 538-5715

Fire Department  
2755 3rd Street, 95307  
(209) 538-5702

### CHOWCHILLA

Police Department  
122 Trinity, 93610  
(559) 665-8600

Fire Department  
240 N. 1st Street, 93610  
(559) 665-8600

### CLOVIS

City Hall  
1033 5th Street  
(559) 324-2060

Police Department/Fire H.Q.  
1233 5th Street, 93612  
(559) 324-2800

### COALINGA

Police Department  
270 N. 6th  
Coalinga, 93210  
(559) 935-2313  
[www.ci.coalinga.ca.us](http://www.ci.coalinga.ca.us)

Fire Department  
240 Coalinga Plaza  
Coalinga, 93710  
1-800-743-5000

### CORCORAN

Police Department  
1031 Chittenden Ave., 93212  
(559) 992-5151

Fire Department  
1033 Chittenden Ave., 93212  
(559) 992-2156

### DELANO

Fire Department  
1001-12th Ave., 93215  
(661) 725-1000

Police Department  
1022-12th Ave.  
P.O. Box 218, 93216  
(661) 721-3377

**ENGINEERING • BUILDING • ELECTRICAL**

# 29 11

## CONTRACTORS

**O. 559.765.2911**  
**C. 707.296.8062**

"For I know the Plans"



**DANIEL EIDSON**  
**Support@2911contractorsllc.com**

**CSLB 1066799**

## Ortez Insurance Agency, LLC

Agency Lic. #6013915

### Lorey Ortez

Managing Agent, Lic #0B43581

805 W 18th Street  
Merced, CA 95340

Office: 209-722-9415

Cell: 559-978-3415

Email: LoreyOrtez@gmail.com



SINCE 1976

**CLOVIS**  
**FUNERAL CHAPEL**

**& CREMATION SERVICES**

*Serving the Catholic community since 1976*

We are a full-service funeral home with a broad array of service offerings, including:

- Traditional funerals • Memorial Services
- Graveside ceremonies • Grief Support • Preplanning
- Basic & full-service cremation options
- Collaboration with other funeral homes

**clovischapel.com • 559-298-7536**

**CITY OFFICES (cont'd)**

**DINUBA**

City Hall  
405 East El Monte Way, 93618  
(559) 591-5900

Police Department  
680 S. Alta, 93618  
(559) 591-5911

Fire Department  
496 East Tulare 93618  
(559) 591-5931  
Co. (559) 591-5931

**DOS PALOS**

Police Department  
1546 Golden Gate Ave., 93620  
(209) 392-2500

Fire Department  
1540 Golden Gate Ave., 93620  
(209) 392-2081

**EXETER**

Police Department  
100 North "C" Street, 93221  
(559) 592-3103

Fire Department  
137 North "F" Street, 93221  
Phone: (559) 592-3714

**FARMERSVILLE**

Police Department  
909 W. Visalia Road, 93223  
(559) 747-0321

Fire Department  
909 W. Visalia Road, 93223  
(559) 747-0791

**FIREBAUGH**

Police Department  
1575-11th Street 93622  
(559) 659-3051

Fire Department  
1551-11th Street  
(559) 659-2061

**FOWLER**

Police Department  
128 South 5th  
Fowler, 93625  
128 South 5th  
Fowler, 93625  
(559) 834-3254

**FRESNO**

City Hall  
2600 Fresno Street, 93721-3218  
(559) 621-2849  
[www.ci.fresno.ca.us](http://www.ci.fresno.ca.us)

Police Department  
2323 Mariposa Mall, 93715  
M/A: P.O. Box 1271, 93715-1271  
(559) 621-7000  
Records: (559) 621-2534

Fire Department  
911 H Street, 93721  
(559) 621-4199

**GUSTINE**

Police Department  
682 3rd Ave.  
P.O. Box 16, 95322  
(209) 854-3737

Fire Department  
686 3rd Ave., 95322  
(209) 854-6804

**HANFORD**

Police Department  
425 North Irwin, 93230  
(559) 585-2540  
[www.ci.hanford.ca.us](http://www.ci.hanford.ca.us)

Fire Department  
350 W. Grangeville, 93230  
(559) 585-2545

# 24 HOUR EMERGENCY SERVICES

## Cleaning & Emergency Specialties

---

- Water Damage Mitigation
- Mold Remediation
- Hoarding Clean-up
- Vandalism/ Board ups
- Total Loss Inventory
- Fire & Smoke Damage
- Construction Services
- Biohazard Clean-up



# ELITE RESTORATION BY VILLEGAS

**FELIPE VILLEGAS** - *President*

SCLB#1075198 • Felipe@restoreelitev.com

**SERVING TULARE, KINGS AND FRESNO COUNTIES**

**559-931-9911 • customerservice@restoreelitev.com**

## CITY OFFICES (cont'd)

### KERMAN

Kerman City Hall  
850 South Madera Ave., 93630  
(559) 846-9384

Police Department  
850 South Madera Ave., 93630  
(559) 846-6633

### KINGSBURG

Police Department  
1300 California St.  
(559) 897-2931

Fire Department  
1460 Marion Street  
(559) 897-5457

### KINGS CANYON NATIONAL PARK

(See Sequoia-Kings Canyon  
National Parks)

### LEMOORE

Police Department  
657 Fox Street, 93245  
(559) 924-9574  
www.lemoore.com

Fire Department  
210 Fox Street  
(559) 924-6797

### LINDSEY

Police Department  
185 N. Gale Hill, 93247  
(559) 562-2511

City Hall  
251 E. Honolulu St., 93247  
(559) 562-5927

Fire Department  
185 North Gale Hill, 93247  
(559) 562-2511

### LIVINGSTON

City Hall  
1416 "C" Street  
Mail: P.O. Box 308  
Livingston, 95334  
(209) 394-8041  
www.livingston.ca.org

Police Department  
1446 "C" Street  
P.O. Box 308, 95334  
(209) 394-7916

Fire Department  
1430 "C" Street  
(209) 394-7919

### LOS BANOS

Police Department  
945 5th Street  
Los Banos, 93635  
(209) 827-7070

Fire Department  
333 7th Street  
Los Banos, 93635  
(209) 827-7025

### MADERA

Police Department  
330 S. "L" Street, 93638-3727  
(559) 675-4200

Fire Department  
317 North Lake, 93638  
(559) 661-5497

### MENDOTA

City Hall  
643 Quince, 93640  
(559) 655-4298

Police Department  
Refer to Fresno Co. Sheriff's Dept.



## Industries We Serve

	<b>RESIDENTIAL</b>
	<b>MULTI-FAMILY</b>
	<b>COMMERCIAL</b>
	<b>EDUCATIONAL FACILITIES &amp; PUBLIC SECTOR</b>
	<b>HEALTHCARE FACILITIES</b>

**24/7 EMERGENCY  
RESPONSE LINE:  
(855) DRY-CREEK**

## Our Services

### Emergency Services



#### WATER MITIGATION

- Water Extraction
- Structural Drying
- Corrosion Control
- Thermal Imaging Analysis



#### FIRE RESTORATION

- Structural Cleaning
- Deodorization & Soot Removal
- HVAC Cleaning
- Temporary Power
- Carpet Cleaning

### Environmental Services



#### ASBESTOS & LEAD

- Asbestos & Lead Paint Removal
- Containment & Air Monitoring
- Decontamination & Encapsulation
- Hazardous Waste Disposal



#### MOLD REMEDIATION

- Mold & Moisture Inspection
- Containment & Ventilation
- Removal & Remediation

### Construction Services



#### RECONSTRUCTION

- Storm & Wind Damage Repair
- Demolition & Debris Removal
- Fire Damage Reconstruction
- Water & Flood Damage Reconstruction
- Vehicle Impact Damage Restoration
- General Contracting
- Tenant Improvements
- Customized Design Services



#### Sacramento Office (Corporate)

- ☎ (209) 744-8005
- 📍 105 Enterprise Ct. Galt, CA 95632

#### East Bay Office

- ☎ (925) 466-2005
- 📍 5700 Imhoff Drive, Suite H, Concord, CA 94520

#### Central California

- ☎ (559) 400-0214
- 📍 2507 N Bundy Drive, Fresno, CA 93724

## CITY OFFICES (cont'd)

### MERCED

City Hall  
678 W. 18th St., 95340  
(209) 385-6866  
[www.ci.merced.ca.us](http://www.ci.merced.ca.us)

Police Department  
470 W. 11th St., 95341-6046  
(209) 385-8836

Fire Department  
P/A: 99 E. 16th St.  
M/A: 678 W. 18th St., 95340  
(209) 385-6891

### MODESTO

City Hall  
1010 10th Street  
P.O. Box 642, 95353  
(209) 577-5200  
[www.ci.modesto.ca.us](http://www.ci.modesto.ca.us)

Fire Department  
1010 10th Street, 95354  
(209) 517-5553

Police Department  
600 10th Street  
P.O. Box 3313, 95354  
(209) 572-9500

### OAKDALE

City Fire Department  
325 East "G", 95361  
(209) 847-5904  
[www.ci.oakdale.ca.us](http://www.ci.oakdale.ca.us)

Police Department  
245 North 2nd Ave., 95361-3028  
(209) 847-2231

### OAKHURST

Mariposa County Sheriff Office  
5099 Old Hwy. N.  
Mariposa, CA 95338  
(209) 966-3614

### ORANGE COVE

City Hall  
633 Sixth St., 93646  
(559) 626-4488

County Sheriff's Dept.  
Refer to Fresno Co. Sheriff's Dept.

### PARLIER

City Hall  
1100 E. Parlier Ave., 93648  
(559) 646-3545

Police Department  
8770 S. Mendocino Ave., 93648  
(559) 646-6600

### PATTERSON

Fire Department  
City Hall  
344 W. Las Palmas  
P.O. Box 565, 95363  
(209) 892-5621

Police Department  
City Hall  
344 W. Las Palmas, 95363  
(209) 892-5071

### PORTERVILLE

City Hall  
291 N. Main, 93257  
(559) 782-7466

Police Department  
350 N. "D" St., 93257  
(559) 782-7402

Fire Department  
40 W. Cleveland St., 93257  
(559) 782-7526

### REEDLEY

Reedley City Hall  
845 "G" Street, 93654  
(559) 637-4200  
[www.reedley.com](http://www.reedley.com)

**CITY OFFICES (cont'd)**

**MERCED**

City Hall  
678 W. 18th St., 95340  
(209) 385-6866  
www.ci.merced.ca.us

Police Department  
470 W. 11th St., 95341-6046  
(209) 385-8836

Fire Department  
P/A: 99 E. 16th St.  
M/A: 678 W. 18th St., 95340  
(209) 385-6891

**MODESTO**

City Hall  
1010 10th Street  
P.O. Box 642, 95353  
(209) 577-5200  
www.ci.modesto.ca.us

Fire Department  
1010 10th Street, 95354  
(209) 517-5553

Police Department  
600 10th Street  
P.O. Box 3313, 95354  
(209) 572-9500

**OAKDALE**

City Fire Department  
325 East "G", 95361  
(209) 847-5904  
www.ci.oakdale.ca.us

Police Department  
245 North 2nd Ave., 95361-3028  
(209) 847-2231

**OAKHURST**

Mariposa County Sheriff Office  
5099 Old Hwy. N.

Mariposa, CA 95338  
(209) 966-3614

**ORANGE COVE**

City Hall  
633 Sixth St., 93646  
(559) 626-4488

County Sheriff's Dept.  
Refer to Fresno Co. Sheriff's Dept.

**PARLIER**

City Hall  
1100 E. Parlier Ave., 93648  
(559) 646-3545

Police Department  
8770 S. Mendocino Ave., 93648  
(559) 646-6600

**PATTERSON**

Fire Department  
City Hall  
344 W. Las Palmas  
P.O. Box 565, 95363  
(209) 892-5621

Police Department  
City Hall  
344 W. Las Palmas, 95363  
(209) 892-5071

**PORTERVILLE**

City Hall  
291 N. Main, 93257  
(559) 782-7466

Police Department  
350 N. "D" St., 93257  
(559) 782-7402

Fire Department  
40 W. Cleveland St., 93257  
(559) 782-7526

**REEDLEY**

Reedley City Hall  
845 "G" Street, 93654  
(559) 637-4200  
www.reedley.com

Police Department  
843 "G" Street, 93654  
(559) 637-4250

Fire Department  
1060 "D" Street  
(559) 637-4230

## CITY OFFICES

### RIDGECREST

Fire Department  
815 W. Dolphin Ave., 93555  
(760) 371-2181

Police Department  
100 W. California Ave.  
(760) 499-5100

Sheriff  
132 East Coso  
(800) 861-3110

### RIVERBANK

Police Department  
(Stanislaus County)  
6707 3rd Street, 95367  
(209) 869-7162

Fire Department &  
Stanislaus County Fire  
3324 Topeka  
(209) 869-2713  
Oakdale No.: (209) 552-3700

### SANGER

Police Department  
1700 7th Street 93657  
(559) 875-8521

Fire Department  
1700 7th Street  
(559) 875-6568

### SELMA

Police Department  
1935 E. Front St., 93662  
(559) 896-2525

Selma Fire Department  
1927 Front St., 93662  
(559) 896-2213

### TULARE

Fire Department  
800 S. Blackstone, 93274  
(559) 684-4300

### TURLOCK

Fire Department  
156 S. Broadway Ste. 250  
Turlock, 95380  
(209) 668-5580  
[www.ci.turlock.ca.us](http://www.ci.turlock.ca.us)

Police Department  
Business Office:  
244 N. Broadway  
Box 1526, 95381  
(209) 668-5550

### VISALIA

City Hall  
707 W. Acequia  
(559) 713-4300  
[www.ci.visalia.ca.us](http://www.ci.visalia.ca.us)

Police Department  
303 S. Johnson, 93291  
(559) 734-8116

Records  
420 N. Burke, 93292  
(559) 713-4222

Fire Department  
707 W. Acequia Ave., 93291  
(559) 713-4266

### WASCO

Kern County Fire Department  
2424 7th Street, 93280  
(661) 758-6447

Kern County Sheriff's Department  
748 "F" Street, 93280  
(661) 758-7266

### WOODLAKE

City Hall  
350 N. Valencia Blvd., 93286  
(559) 564-8055

Police Department  
350 N. Valencia Blvd., 93286  
(559) 564-3346

### YOSEMITE NATIONAL PARK

(91 via Hwy. 41)  
(123 via Planada)  
(134 via Merced)  
Law Enforcement Officer  
(559) 372-0246  
Chief Ranger's Office  
Yosemite National Park  
(559) 372-0211

## COUNTY DEPARTMENTS

### FRESNO COUNTY DEPARTMENTS

#### **Agricultural Commissioner**

1720 South Maple Phone: (559) 456-7510 FresnoAg@fresno.ca.gov  
Fresno, CA 93702 Fax: (559) 456-7379

#### **Assessor Recorder**

Hall of Records Phone: (559) 600-3534 recorderwebmail@fresno.ca.gov  
2281 Tulare St., #201 Mailing address:  
Fresno, CA 93721 P.O. Box 1146, Fresno, CA 93715

#### **Auditor-Controller/Treasurer-Tax Collector**

Hall of Records Phone: (559) 600-3496 TaxCollectorWebMail@fresno.ca.gov  
2281 Tulare St., #105 Fax: (559) 600-1444  
Fresno, CA 93721

#### **Board of Supervisors**

Hall of Records Phone: (559) 600-3529 bseidel@fresno.ca.gov  
2281 Tulare St., #300 Fax: (559) 488-6830  
Fresno, CA 93721

#### **Clerk — Civil**

Fresno County Court House Phone: (559) 488-3003  
1100 Van Ness, M-100  
M/A: P.O. Box 1628 93717  
Fresno, CA 93721

#### **Cooperative Extension**

1720 South Maple Phone: (559) 456-7285 cefresno@ucdavis.edu  
Fresno, CA 93702 Fax: (559) 456-7375

#### **Coroner/Public Administrator-Guardian**

760 W. Nielsen Phone: (559) 268-0139  
Fresno, CA 93706

#### **County Clerk/Registrar of Voters**

2221 Kern St. Phone: (559) 488-3003 clerk-elections@fresno.ca.gov  
Fresno, CA 93721 Elections: (559) 488-3246

#### **County Counsel**

2220 Tulare St. 5th Floor Phone: (559) 488-3479  
Fresno, CA 93721

#### **Department of Child Support Services**

2220 Tulare St. Suite 310P Phone: (559) 494-1111 ChildSupport@fresno.ca.gov  
Fresno, CA 93721

#### **District Attorney**

2220 Tulare St. Suite 1000 Phone: (559) 600-3141 damail@fresno.ca.gov  
Fresno, CA 93721 Fax: (559) 600-4400

## COUNTY DEPARTMENTS (cont'd)

### **Education**

1111 Van Ness Ave. Phone: (559) 265-3000 webmaster@fcoe.k12.ca.us  
Fresno, CA 93721 General Services

2220 Tulare St., Suite 1600 Phone: (559) 600-1721  
Fresno, CA 93721 Fax: (559) 600-1708

### **General Services**

2220 Tulare St., #1600 Phone: (559) 600-1721  
Fresno, CA 93721 Fax: (559) 600-1708

### **Law Library, Frank J. Creede Jr.**

County Courthouse, #600 Phone: (559) 600-2227  
1100 Van Ness Ave. Fax: (559) 442-4960  
Fresno, CA 93721

### **Library**

2420 Mariposa St. Phone: (559) 600-3184 tom.zimoski@fresnolibrary.org  
Fresno, CA 93721

### **Planning & Resource Management**

2220 Tulare St., 6th Floor Phone: (559) 600-4078 bpau@co.fresno.ca.us  
Fresno, CA 93721 Fax: (559) 262-4879

### **Probation**

1100 Van Ness, 8th Floor Phone: (559) 600-6040 fresnocoprobation@co.fresno.ca.us  
Fresno, CA 93721

### **Public Defender**

2220 Tulare St., #300 Phone: (559) 600-3456 publicdefender@co.fresno.ca.us  
Fresno, CA 93721 Fax: (559) 262-4104

### **Public Works**

2220 Tulare St., 7th Floor Phone: (559) 600-4078 bpau@co.fresno.ca.us  
Fresno, CA 93721 Fax: (559) 262-4879

### **Recorder**

Hall of Records, #302 Phone: (559) 600-3476 recorderwebmail@co.fresno.ca.us  
2281 Tulare St.  
Fresno, CA 93721

### **Retirement Association**

1111 H St., Room 102 Phone: (559) 457-0681 fcerawebsite@co.fresno.ca.us  
Fresno, CA 93721 Fax: (559) 457-0318

### **Sheriff**

2200 Fresno St. Phone: (559) 600-8400 rpierce@fresno.ca.gov  
Fresno, CA 93721

### **Superior Court**

1100 Van Ness Ave. Phone: (559) 457-2000 ewhite@fresno.ca.gov  
Fresno, CA 93724-0002

## COUNTY DEPARTMENTS (cont'd)

### **Veterans Service Office**

2281 Tulare St., Room 107  
Fresno, CA 93721

Phone: (559) 488-3436

### **Vital Statistics**

1221 Fulton Mall  
Fresno, CA 93721

Phone: (559) 445-3310

## **KERN COUNTY**

### **County Clerk**

1115 Truxtun Ave., 5th Floor  
Bakersfield, CA 93301

Phone: (661) 321-9472

[board@co.kern.ca.us](mailto:board@co.kern.ca.us)

### **Sheriff**

1350 Norris Road  
Bakersfield, CA 93308

Phone: (661) 391-7500

### **Fire Department**

2101 H St.  
Bakersfield, CA 93301

Phone: (661) 326-3911

### **Coroner**

1832 Flower  
Bakersfield, CA 93305

Phone: (661) 861-2606

## **KINGS COUNTY**

### **Agricultural Commissioner**

680 N. Campus Drive, Ste. B  
Hanford, CA 93230

Phone: (559) 582-3211 ext. 2830

[agstaff@co.kings.ca.us](mailto:agstaff@co.kings.ca.us)

### **County Clerk**

Kings County Gov. Center  
1400 West Lacey Blvd.  
Hanford, CA 93230

Phone: (559) 582-3211 ext. 2470

Fax: (559) 582-6639

### **Corner**

Kings County Gov. Center  
1400 West Lacey Blvd.  
Hanford, CA 93230

Phone: (559) 582-3211 ext. 1821

### **District Attorney**

Kings County DA's Office  
1400 West Lacey Blvd.  
Hanford, CA 93230

Phone: (559) 582-0326

Fax: (559) 582-6639

### **Farm and Home Advisor**

680 Campus Dr., Ste. A  
Hanford, CA 93230

Phone: (559) 582-3211 ext. 2730

### **Fire Department**

Kings County Gov. Center  
1400 West Lacey Blvd.  
Hanford, CA 93230

Phone: (559) 582-3211 ext. 2981

## COUNTY DEPARTMENTS (cont'd)

### **Sheriff**

Kings County Gov. Center      Phone: (559) 584-9276  
1400 West Lacey Blvd.  
Hanford, CA 93230

## **MADERA COUNTY DEPARTMENTS**

### **Agricultural Commissioner**

332 Madera Avenue      Phone: (559) 675-7876  
Madera, CA 93637

### **Coroner**

216 West 6th      Phone: (559) 675-7774  
Madera, CA 93637

### **County Clerk**

County Court House      Phone: (559) 675-7721  
209 West Yosemite  
Madera, CA 93637

### **District Attorney**

Court House      Phone: (559) 675-7726  
209 West Yosemite  
Madera, CA 93637

### **Farm and Home Advisor**

328 Madera Avenue      Phone: (559) 675-7879  
Madera, CA 93637

### **Sheriff**

14143 Rd. 28      Phone: (559) 675-7770  
Madera, CA 93638  
Bass Lake Substation:      Phone: (559) 642-3201  
Oakhurst Substation:      Phone: (559) 658-2555

## **MARIPOSA COUNTY DEPARTMENTS**

### **County Clerk**

4982 10th Street      Phone: (209) 966-2007  
M/A: P.O. Box 247 95338      Fax: (209) 966-6496  
Mariposa, CA 95338

### **District Attorney**

5089 Bullion      Phone: (209) 966-3626  
M/A: P.O. Box 730 95338      Fax: (209) 966-5681  
Mariposa, CA 95338

### **Farm Advisor**

5009 Fairgrounds Road      Phone: (209) 966-2417  
Mariposa, CA 95338      Fax: (209) 966-2417

## COUNTY DEPARTMENTS (cont'd)

### **Fire Department**

(California Dept. of Forestry) Phone: (209) 966-3622  
Mariposa Station Fax: (209) 966-0252  
P.O. Box 162  
Mariposa, CA 95338

### **Sheriff**

P.O. Box 276 Phone: (209) 966-3615  
Mariposa, CA 95338 Fax: (209) 742-5090

## MERCED COUNTY DEPARTMENTS

### **Agricultural Commissioner**

2139 W. Wardrobe Ave. Phone: (209) 385-7431  
Merced, CA 95340 Fax: (209) 725-3536

### **Coroner**

455 E. 13th Street Phone: (209) 385-7369  
Merced, CA 95340

### **County Clerk**

Superior Courts Bldg., Room #14 Phone: (209) 385-7501  
2222 "M" Street  
Merced, CA 95340

### **District Attorney**

2222 "M" Street Phone: (209) 385-7381 - Felony  
Merced, CA 95340 Phone: (209) 385-7382 - Misdemeanor

### **Fire Department**

Central Station Phone: (209) 385-7347  
735 Martin Luther King Jr. Way  
Merced, CA 95340

### **Sheriff**

700 West 22nd Street Phone: (209) 385-7419  
Merced, CA 95340

## STANISLAUS COUNTY DEPARTMENTS

### **Agricultural Commissioner**

3800 Cornucopia Way, Phone: (209) 525-4730  
Suite B Fax: (209) 525-4790  
Modesto, CA 95358

### **County Clerk**

P.O. Box 828 85353 Phone: (209) 525-5250  
1100 "I" St., Rm 101  
Modesto, CA 95353

## COUNTY DEPARTMENTS

### **Sheriff**

250 East Hackett Phone: (209) 525-7216  
Modesto, CA 95358

### **Farm and Home Advisor**

733 County Center Phone: (209) 525-6800  
Three Courts  
Modesto, CA 95355

### **Stanislaus County Fire Dept.**

929 Oakdale Road Phone: (209) 572-9590  
Modesto, CA 95355

## TULARE COUNTY DEPARTMENTS

### **Agricultural Commissioner**

4437 S. Laspina St. Phone: (559) 684-3350  
Tulare, CA 93274

### **County Clerk**

County Civic Center, Rm. 105  
221 S. Mooney, Phone: (559) 636-5051  
Visalia, CA 93291-4593

### **Coronor**

1225 S. "O" Street Phone: (559) 685-2593  
Tulare, CA 93274

### **Fire Department**

(Tulare Rangers Hdq.) Phone: (559) 732-7270  
1968 S. Lovers Lane  
Visalia, CA 93292

### **Sheriff**

County Civic Center Phone: (559) 733-6241  
P/A: 2404 W. Burrel  
Visalia, CA 93291-4580

## TUOLUMNE COUNTY DEPARTMENTS

### **Agricultural Commissioner**

22365 S. Airport Rd. Phone: (209) 533-5691  
Sonora, CA 95370

### **County Clerk**

48 W. Yancy St. Phone: (209) 533-5573  
Sonora, CA 95370

### **Sheriff-Coroner**

28 N. Lower Sunset Dr. Phone: (209) 533-5855  
Sonora, CA 95370

**CALIFORNIA STATE OFFICES**

**CALIFORNIA STATE DEPARTMENT OF INSURANCE**

Dave Jones, Commissioner  
Capitol Mall, Suite 1700  
Sacramento, California 95814  
(916) 492-3500

**DEPARTMENT OF MOTOR VEHICLES**

State Headquarters  
2570 24th Street  
Sacramento, California 95818  
(916) 657-7669 (Registration)  
All DMV Offices .....(800) 777-0133  
Bakersfield — 3120 “F” St., 93301  
Clovis — 2103 Shaw Ave., 93612  
Coalinga — 406 East Elm Ave., 93210  
Delano — 631 Jefferson, 93215  
Fresno — 655 W. Olive, 93728  
Fresno — 6420 Blackstone Ave., 93710  
Hanford — 701 W. Hanford Armona Road, 93230  
Los Banos — 814 West L St., 93635  
Madera — 1206 W. Maple, 93637  
Mariposa — 5254 Hwy. 49 - North, 95338  
Merced — 1313 W. 12th St., 95340  
Modesto — 124 Burney, 95354  
Porterville — 329 E Olive Ave.  
Reedley — 558 E. Dinuba Ave., 93654  
Shafter — 548 Walker, 93263  
Sonora — 885 Morningstar Drive, 95370  
Tulare — 274 E. Cross, 93274  
Turlock — 825 Monte Vista, 95382  
Visalia — 1711 E. Main, 93291

**DEPARTMENT OF REHABILITATION**

721 Capitol Mall  
Sacramento, California 95814  
(916) 324-1313  
(559) 445-6011

**CALIFORNIA HIGHWAY PATROL**

1380 E. Fortune Ave..  
Fresno, California 93725  
(559) 705-2200

## CALIFORNIA STATE OFFICES

### WORKMAN'S COMPENSATION APPEALS BOARD

2550 Mariposa Street, #2016  
Fresno, California 93721  
(559) 445-5355

### WORKMEN'S COMPENSATION APPEALS BOARD REHAB BUREAU

Fred Avina & Charles Weaver  
2550 Mariposa Street, Room 2035  
Fresno, California 93721  
(559) 445-5066

### CALIFORNIA DEPARTMENT OF FORESTRY

Fresno County—Reports are obtained from California Department of Forestry  
210 South Academy  
Sanger, California 93721  
(559) 485-7500  
(See County Listings for other rural fire departments)



Proud supporter of the  
Central California Adjuster's Association.



Pick-up subject to geographic and other restrictions. © 2010 Enterprise Rent-A-Car Company. A04201 01.10

## U. S. GOVERNMENT OFFICES

### FEDERAL AVIATION ADMINISTRATION

5055 E. Anderson, Suite 110, Fresno 93727 .....(559) 454-0256

### FEDERAL BUREAU OF INVESTIGATION

450 Golden Gate Ave., 13th Floor .....(415) 533-7400  
San Francisco, California 94102

### FEDERAL COURTS – CLERKS

2500 Tulare St., #4401, Fresno 93721 .....(559) 497-4500

### SECRET SERVICE DIVISION

5200 N. Palm, Suite 207, Fresno 93704.....(559) 487-5204

### SEQUOIA NATIONAL FOREST

1859 S. Newcomb, Porterville 93257.....(559) 784-1500

### SEQUOIA-KINGS CANYON NATIONAL PARK

Ash Mountain Headquarters, Three Rivers 93271.....(559) 565-3341

### SIERRA NATIONAL FOREST

1600 Tollhouse Rd., Clovis 93612.....(559) 297-0906

### SOCIAL SECURITY ADMINISTRATION

5060 E. Clinton Way, Fresno 93727.....(866) 366-4918

5300 Office Park Dr., Suite 100, Bakersfield 93309 .....(661) 861-4242

600 W. Olive, Merced 95348 .....(209) 723-2072

1194 N. Highway 49, Sonora 95370 .....(209) 523-5101

1521 Carpenter Rd., Modesto 95351 .....(209) 523-2670

1901 E. Noble, Visalia 93292.....(866) 399-8475

3558 Deer Park Dr., Stockton 95219 .....(877) 803-6314

### U.S. ATTORNEY

2500 Tulare St., #5290, Fresno 93721 .....(559) 497-4000

### U.S. MARSHALL

2500 Tulare St., #5290, Fresno 93721 .....(559) 497-5600

### U.S. WEATHER BUREAU

900 Foggy Bottom Road, Hanford, CA .....(559) 584-3452

### YOSEMITE NATIONAL PARK

Rangers Office

P.O. Box 577, Yosemite 95389.....(559) 372-0200

**CALIFORNIA HIGHWAY PATROL OFFICES**

www.chp.ca.gov

**ALTADENA** — 2130 Windsor, Altadena 91001 .....(626) 296-8100  
**ALTURAS** — 905 W. “C” St., Alturas 96101 .....(530) 233-2919  
**AMADOR** — 301 Clinton Rd., Jackson 95642 .....(209) 223-4890  
**ANTELOPE VALLEY** — 2041 West Avenue “I”, Lancaster 93536  
    P.O. Box 1570 (93539).....(661) 948-8541  
**ARROWHEAD** — 31230 Hwy. 18, P.O. Box 997, Running Springs 92382  
    .....(909) 867-2791  
**ATWATER** — 1500 Bell Drive, Atwater 95301 .....(209) 356-2956  
**AUBURN** — 9440 Indian Hill Rd., P.O. Box 997, Newcastle 95658 ... (916) 663-3344  
**BAKERSFIELD** — 9855 Compagnoni Street, Bakersfield 93313 .....(661) 396-6600  
**BALDWIN PARK** — 14039 Francisquito Ave., P.O. Box 1010,  
    Baldwin Park, 91706 .....(626) 338-1164  
**BARSTOW** — 300 E. Mt. View, Barstow 92311 .....(760) 255-8700  
**BISHOP** — 469 S. Main St., Bishop 93514 .....(760) 872-5150  
**BLYTHE** — 430 South Broadway, Blythe 92225 .....(760) 922-6141  
**BRIDGEPORT** — 125 Main Street, P.O. Box 158, Bridgeport 93517..(760) 932-7995  
**BUELLTON** — 166 Industrial Way, Buellton 93427 .....(805) 688-5551  
**BUTTONWILLOW** — 29449 Stockdale, Bakersfield 93312.....(661) 764-5580  
**CASTRO VALLEY** — 21020 Redwood Road, Castro Valley 94546 ... (510) 581-9028  
**CAPISTRANO** — 32951 Camino Capistrano, San Juan, Capistrano 92675  
    .....(949) 487-4000  
**CHICO** — 995 Fir St., P.O. Box 1779, Chico 95927 .....(530) 879-1999  
**CLEARLAKE** — 5700 Live Oak Dr., P.O. Box 340, Kelseyville 95451(707) 279-0103  
**COALINGA** — 125 S. Sixth St., P.O. Box 866, Coalinga 93210 .....(559) 935-2093  
**CONTRA COSTA** — 5001 Blum Rd., Martinez 94553 .....(925) 646-4980  
**CRESCENT CITY** — 1444 Parkway Dr., Crescent City 95531.....(707) 464-3117  
**DUBLIN** — 4999 Gleason Dr., Dublin 94568 .....(925) 828-0466  
**EL CAJON** — 1722 E. Main St., El Cajon 92021 .....(619) 401-2000  
**EL CENTRO** — 2331 Highway 86, Imperial 92251 .....(760) 482-2500  
**FORT TEJON** — 1033 Lebec Rd., Lebec CA 93243 .....(661) 248-6655  
**FRESNO** — 1380 E. Fortune Ave., Fresno, CA 93725 .....(559) 705-2200  
**GARBERVILLE**- 30 West Coast Rd., Redway 95560-9999  
    P.O. Box 515, Garberville, 95440 .....(707) 923-2155  
**GILROY** — See Hollister-Gilroy  
**GLENDALE** — See Verdugo Hills  
**GOLD RUN** — 50 Canyon Creek Rd., Gold Run 95717  
    P.O. Box 8, Gold Run 95717 .....(530) 389-2205  
**GRAPEVINE INSPECTION FACILITY** — 32829 Interstate 5, Lebec 93243  
    .....(661) 858-2540  
**GRASS VALLEY** — 900 Sutton Way, Grass Valley 95945 .....(530) 477-4900  
**HANFORD** — 1565 Glendale Ave., P.O. Box F 831, Hanford 93230 ..(559) 582-0231  
**HAYWARD** — 2434 Whipple Rd., Hayward 94544 .....(510) 489-1500  
**HOLLISTER-GILROY** — 740 Remz Lane, Gilroy 95020 .....(408) 848-2324  
    P.O. Box 337, Gilroy 95021  
**HUMBOLDT** — 255 E. Samoa Blvd., Arcata 95521-6797.....(707) 822-5981  
**INDIO** — 79-650 Varner Rd., Indio 92203 .....(760) 772-5300

**CALIFORNIA HIGHWAY PATROL OFFICES (cont'd)**

<b>KING CITY</b> — 2 Broadway Circle, King City 93930 . . . . .	(831) 385-3216
<b>LAKE VALLEY</b> — See South Lake Tahoe	
<b>LEBEC</b> — See Fort Tejon . . . . .	(661) 248-6655
<b>LOS ANGELES COMMUNICATION CENTER</b> — 2901 West Broadway, Los Angeles 90041 . . . . .	(323) 259-2000
<b>CENTRAL LOS ANGELES</b> — 777 W. Washington Blvd., P.O. Box 15660, Los Angeles 90015 . . . . .	(213) 744-2331
<b>EAST LOS ANGELES</b> — 1601 Corporate Center, Monterey Park 91754 . . . . .	(323) 980-4600
<b>SOUTH LOS ANGELES</b> — 19700 Hamilton Ave., Torrance 90502 . .	(310) 516-3355
<b>WEST LOS ANGELES</b> — 6300 Bristol Parkway, Culver City 90230 .	(310) 642-3939
<b>LOS BANOS</b> — 706 W. Pacheco Blvd., Los Banos 93635 . . . . .	(209) 826-3811
<b>MADERA</b> — 3051 Airport Dr., Madera 93637 . . . . .	(559) 675-1025
<b>MARIN</b> — 53 San Clemente Dr., P.O. Box 6, Corte Madera 94925 . . .	(415) 924-1100
<b>MARIPOSA</b> — 5264 Hwy 49 North, P.O. Box 217, Mariposa 95338 . .	(209) 966-3656
<b>MERCED</b> — 1500 Bell Drive, Merced . . . . .	(209) 356-6600
<b>MISSION GRANDE INSPECTION FACILITY</b> — 4751 Hwy. 680, P.O. Box 553, Sunol 94586 . . . . .	(925) 862-2223
<b>MODESTO</b> — 4030 Kiernan Ave., Modesto 95356 . . . . .	(209) 545-7440
<b>MOJAVE</b> — 1313 Hwy. 58, Mojave 93501 . . . . .	(661) 823-5500
<b>MONTEREY</b> — 960 E. Blanco Rd., Monterey 93901 . . . . .	(831) 770-8000
<b>MORONGO BASIN</b> — 63683 - 29 Palms Hwy., HCR 1, Box 61 (92252), Joshua Tree 92252-9707 . . . . .	(760) 366-3707
<b>MT. SHASTA</b> — 618 W. Jessie St., Mt. Shasta 96067 . . . . .	(530) 926-2627
<b>DUNSMUIR GRADE INSPECTION FACILITY</b> — 1001 I-5 South Mt. Shasta 96067 . . . . .	(530) 926-2425
<b>NAPA</b> — 975 Golden Gate Dr., P.O. Box 208, Napa 94559 . . . . .	(707) 253-4906
<b>NEEDLES</b> — 1916 "J" St., Needles 92363 . . . . .	(760) 326-2000
<b>NEWHALL</b> — 28648 The Old Rd., Valencia 91355 . . . . .	(661) 294-5540
<b>NIMITZ INSPECTION FACILITY</b> — 4416 I-880, Fremont 94538 . .	(510) 794-3658
<b>OAKHURST</b> — 40500 Redbud Dr., Oakhurst 93644 . . . . .	(559) 658-6590
<b>OAKLAND</b> — 3601 Telegraph Ave., Oakland 94609 . . . . .	(510) 450-3821
<b>OCEANSIDE</b> — 435 La Tortuga, Vista 92081 . . . . .	(760) 643-3400
<b>OROVILLE</b> — 2072 Third St., P.O. Box 1471, Oroville 95965 . . . . .	(530) 538-2700
<b>PASO ROBLES</b> — See Templeton	
<b>PLACERVILLE</b> — 3031 LoHi Way, P.O. Box 1417, Placerville 95667-1417 . . . . .	(530) 622-1110
<b>PORTERVILLE</b> — 861 -W. Morton Ave., Porterville 93257 . . . . .	(559) 784-7444
<b>QUINCY</b> — 86 W. Main St., Quincy 95971 . . . . .	(530) 283-1100
<b>RANCHO CUCAMONGA</b> — 9530 DiHiburg Ave., Rancho Cucamonga 91730-6014 . . . . .	(909) 980-3994
<b>RED BLUFF</b> — 2550 Main, Red Bluff 96080-2336 . . . . .	(530) 527-2034
<b>REDDING</b> — 2503 Cascade Blvd., Redding 96003-0999 . . . . .	(530) 242-3200
<b>REDWOOD CITY</b> — 355 Convention Way, Redwood City 94063 . . .	(650) 369-6261
<b>RIVERSIDE</b> — 8118 Lincoln Ave., Riverside 92504 . . . . .	(909) 637-8000
<b>EAST SACRAMENTO</b> — 11336 Trade Center Drive, Rancho Cordova 95742 . . . . .	(916) 464-1450

**CALIFORNIA HIGHWAY PATROL OFFICES**

**NORTH SACRAMENTO** — 5109 Tyler Street, Sacramento 95841 . . . .(916) 348-2300  
**SOUTH SACRAMENTO** — 6 Massie Court, Sacramento 95823 . . . . .(916) 681-2300  
**SAN ANDREAS** — 749 Mountain Ranch Rd., San Andreas 95249 . . . .(209) 754-3541  
**SAN BERNARDINO** — 2211 Western Ave., San Bernardino 92411 . .(909) 383-4247  
**SAN DIEGO** — 4902 Pacific Hwy., San Diego 92110 . . . . .(619) 220-5492  
**SAN FRANCISCO** — 455 Eighth St, San Francisco 94103 . . . . .(415) 557-1094  
**SAN GORGONIO PASS** — 195 Highland Springs Ave., Beaumont 92223  
 . . . . .(909) 769-2000  
**SAN JOSE** — 2020 Junction Ave., San Jose 95131 . . . . .(408) 467-5400  
**SAN LUIS OBISPO** — 675 California Blvd., San Luis Obispo 93401 .(805) 593-3300  
**SAN ONOFRE INSPECTION FACILITY** — P.O. Box 2445, Oceanside 92051  
 . . . . .(760) 430-7026  
**SANTA ANA** — 2031 E. Santa Clara Ave., Santa Ana, 92705 . . . . .(714) 567-6000  
**SANTA BARBARA** — 6465 Calle Real, Goleta 93117 . . . . .(805) 967-1234  
**SANTA CRUZ** — 10395 Soquel Dr., Aptos 95003 . . . . .(831) 662-0511  
**SANTA FE SPRINGS** — 10051 Orr & Day Rd., Santa Fe Springs 90670  
 . . . . .(562) 868-0503  
**SANTA MARIA** — 1710 N. Carlotti Dr., Santa Maria 93454 . . . . .(805) 349-8728  
**SANTA ROSA** — 6100 LaBath Ave., Rohnert Park 94928 . . . . .(707) 588-1400  
**SOLANO** — 3050 Travis Blvd., Fairfield 94533 . . . . .(707) 428-2100  
**SONORA** — 18437 Fifth Ave., P.O. Box 676, Jamestown 95327 . . . .(209) 984-3944  
**SO. LAKE TAHOE** — 2063 Hopi Ave, South Lake Tahoe 96150 . . . .(530) 577-1001  
**STOCKTON** — 3330 N. Ad Art Rd., P.O. Box 8466, Stockton 95208 .(209) 938-4800  
**SUSANVILLE** — 472-400 Diamond Crest Rd., Susanville 96130-5001 (530) 257-9605  
**TEMECULA** — 27685 Commerce Center Dr., Temecula 92590 . . . . .(909) 506-2000  
**TEMPLETON** — 101 Duncan Rd., P.O. Box 668 Templeton 93465 . .(805) 434-1822  
**TRACY** — 385 W. Grantline Rd., Tracy 95376 . . . . .(209) 835-8920  
**TRINITY RIVER** — Hwy. 299, 1261 Main St., P.O. Box 1350,  
Weaverville 96093 . . . . .(530) 623-3832  
**TRUCKEE** — 10077 State Rd. 89 So., Truckee 96161 . . . . .(530) 582-7570  
**TRUCKEE INSPECTION FACILITY** — 10077 State Rye, 89 South,  
Truckee 96161 . . . . .(530) 582-7500  
**TWENTYNINE PALMS** — See Morongo Basin  
**UKIAH** — 540 Orchard Ave., Ukiah 95482 . . . . .(707) 467-4420  
**VENTURA** — 4656 Valentine Rd., Ventura 93003,  
P.O. Box 3237, Ventura 93006 . . . . .(805) 662-2640  
**VICTORVILLE** — 14210 Amargosa Rd., Victorville 92392 . . . . .(760) 241-1186  
**VISALIA** — 5025 W. Noble Ave., Visalia 93277 . . . . .(559) 734-6767  
**WESTMINSTER** — 13200 Golden West St., Westminster 92683 . . . .(714) 892-4426  
**WEST VALLEY** — 5825 DeSoto Ave., Woodland Hills 91367 . . . . .(818) 888-0980  
**WILLIAMS** — 806 North St., Williams 95987 . . . . .(530) 473-2821  
**WILLOWS** — 464 N. Humboldt Ave., P.O. Box 883, Willows 95988 .(530) 934-5424  
**WINTERHAVEN** — 1 Killingsworth Dr., Felicity 92283 . . . . .(760) 572-0294  
**WOODLAND** — 13739 Andrew Stevens Dr., Woodland 95776-9322 .(530) 662-4685  
**YREKA** — 1739 S. Main St., P.O. Box 450, Yreka 96097-0450 . . . .(530) 841-6006  
**YUBA-SUTTER** — 1619 Poole Blvd., Yuba City 95993 . . . . .(530) 674-5141

## AREA HOSPITALS

### **Avenal District Hospital**

317 E. Alpine St., Avenal 93204  
(559) 386-2211

### **Bloss Memorial Health Care**

3605 Hospital Rd., Atwater 95301  
(209) 381-2000

### **Central Valley General Hospital**

1025 N. Douty, Hanford 93230  
(559) 583-2100

### **Children's Hospital of**

#### **Central California**

9300 Valley Children's Place  
Madera 93636  
(559) 353-3000

### **Chowchilla Dist. Mem. Hospital**

1104 Ventura Ave., Chowchilla 93610  
(559) 665-3781

### **Clovis Community Hospital**

2755 Herndon, Clovis 93612  
(559) 324-4000

### **Coalinga Regional Medical Center**

1191 Phelps Ave., Coalinga 93210  
(559) 935-6400

### **Community Health Care Center**

1633 S. Court St., Visalia 93277  
(559) 733-1333

### **Community Regional Medical Center**

2823 Fresno St., Fresno 93721  
(559) 459-6000

### **Dameron Hospital**

525 W. Acacia, Stockton 95203  
(209) 944-5550

### **Delano Regional Medical Center**

1401 Garces Hwy., Delano 93215  
(661) 454-3762

### **Del Puerto Hospital**

1700 Keystone Pacific Pkwy B  
Patterson 95363  
(209) 892-9100

### **Doctor's Medical Center**

1441 Florida, Modesto 95350  
(209) 578-1211

### **Emanuel Medical Center**

825 Delbon Ave., Turlock 95382  
(209) 667-4200

### **John C. Fremont Hospital**

5189 Hospital Road  
Mariposa 95338  
(209) 966-3631

### **Fresno Surgery Center**

6125 E. Fresno St., Fresno 93710  
(559) 431-8000

### **Good Samaritan Hospital**

901 Olive Dr.  
Bakersfield 93308  
(661) 215-7500

### **Greater Bakersfield Mem. Hospital**

420 34th, Bakersfield 93301  
(661) 327-4647

### **Hanford Community Medical Center**

450 Greenfield Ave., Hanford 93230  
(559) 582-9000

## AREA HOSPITALS (cont'd)

### **Kaiser Permanente**

4785 N. 1st St., Fresno 93726  
(559) 448-4555

### **Kaiser Permanente**

7300 N. Fresno St., Fresno 93720  
(559) 448-4500

### **Kaweah Delta District Hospital**

400 W. Mineral King Ave.  
Visalia 93291  
(559) 624-2000

### **Kern Medical Center**

1830 Flower St.  
Bakersfield 93305  
(661) 326-2000

### **Kern Valley Hospital**

6412 Laurel Ave., Mt. Mesa 93240  
(760) 379-2681 Lake Isabella

### **Lindsay District Hospital**

831 B Rd 214, Lindsay 93247  
(559) 568-0775

### **Madera Community Hospital**

1250 E. Almond, Madera 93637  
(559) 675-5555

### **Sutter Health Memorial Medical Center**

1700 Coffee Rd., Modesto 95335  
(209) 526-4500

### **Merced Sutter Medical Center**

301 E. 13th, Merced 95340  
(209) 385-7880

### **Mercy Hospital**

2215 Truxtun, Bakersfield 93301  
(661) 282-1755

### **Mercy General Hospital**

2740 "M" St., Merced 95340  
(209) 384-6482

### **Oak Valley District Hospital**

350 S. Oak Ave., Oakdale 95361  
(209) 847-3011

### **Ridgecrest Community Hospital**

1081 N. China Lake, Ridgecrest 93555  
(760) 446-3551

### **Saint Agnes Medical Center**

1303 E. Herndon Ave., Fresno 93720  
(559) 449-3000

### **Saint Joseph's Hospital**

1800 N. California, Stockton 95204  
(209) 943-2000

### **San Joaquin Community Hospital**

2615 Chester Ave., Bakersfield 93301  
(661) 395-3000

### **San Joaquin General Hospital**

500 W. Hospital Rd., French Camp 95231  
(209) 468-6000

### **Stanislaus Medical Center**

(Formerly Scenic General Hospital)  
830 Scenic Dr., Modesto 95353  
(209) 558-7000

### **Selma District Hospital**

1141 Rose Ave., Selma 93662  
(559) 891-1000

### **Sierra Hospital**

Refer to Sonora  
Community Hospital  
(559) 532-7181

### **Sierra-Kings Hospital**

372 W. Cypress Ave., Reedley 93654  
(559) 638-8155

### **Sierra View District Hospital**

465 W. Putnam Ave.  
Porterville 93257  
(559) 784-1110

### **Sonora Community Hospital**

1000 Greenley Rd., Sonora 95370  
(209) 532-5000

## AREA HOSPITALS

### **Tehachapi Hospital**

1100 Magellan Drive  
Tehachapi 93561  
(661) 823-3000

### **Tulare District Hospital**

869 Cherry, Tulare 93274  
(559) 688-0821

### **Tuolumne General Hospital**

101 Hospital Rd., Sonora 95370  
(209) 533-7100

### **Veterans Administration Hospital**

2615 E. Clinton, Fresno 93703  
(559) 225-6100

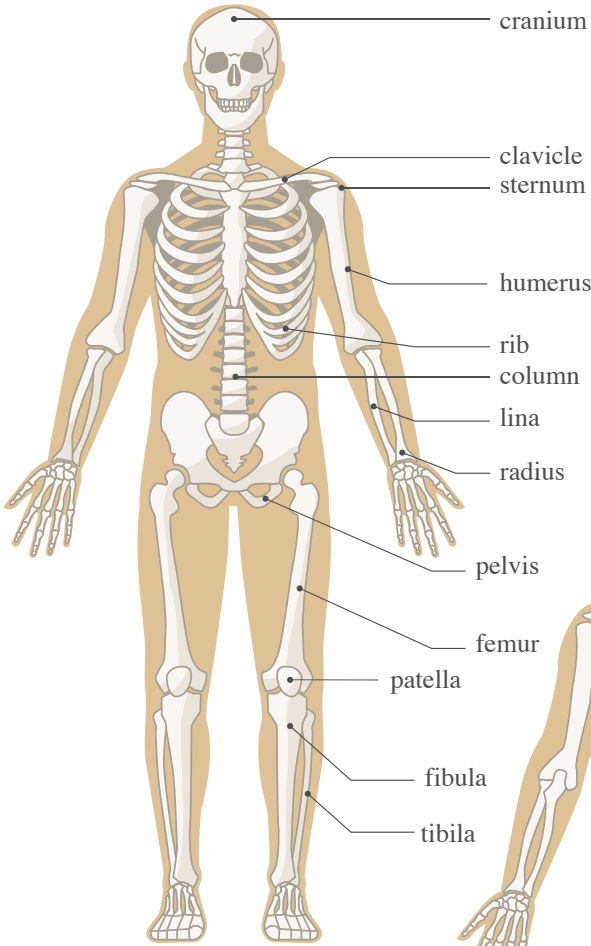
### **Westside Community Hospital**

151 S. Hwy. 33, Newman 95360  
(209) 862-2951

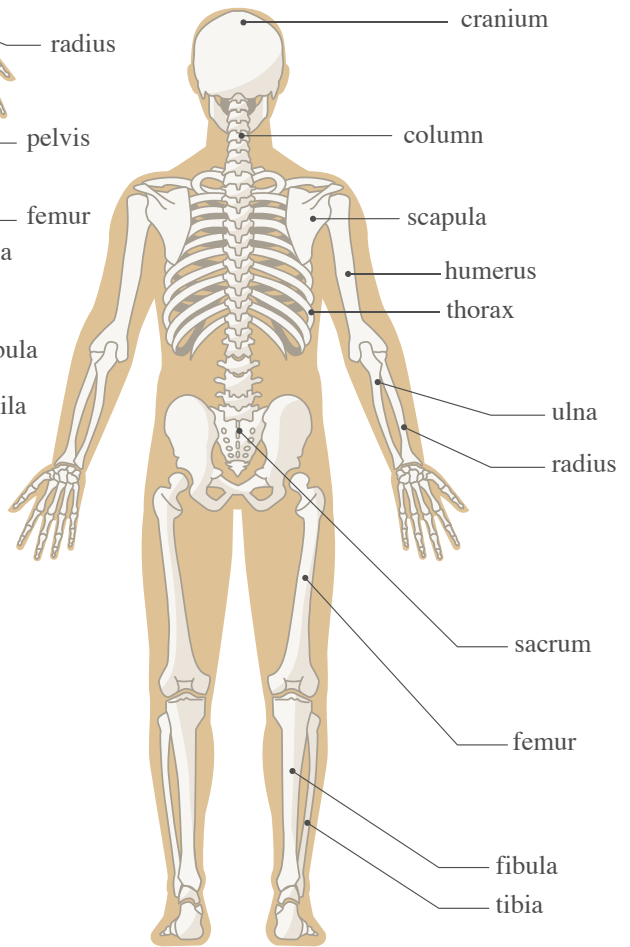
# Anatomical Terms

## SKELETON

### FRONT & BACK VIEWS



**FRONT**



**BACK**

## Anatomical Terms

### SPINE



#### NECK

pars cervicalis  
columnae vertebralis

#### CHEST

pars thoracica  
columnae vertebralia

#### LOWER BACK

pars lumbalis  
columnae vertebralis

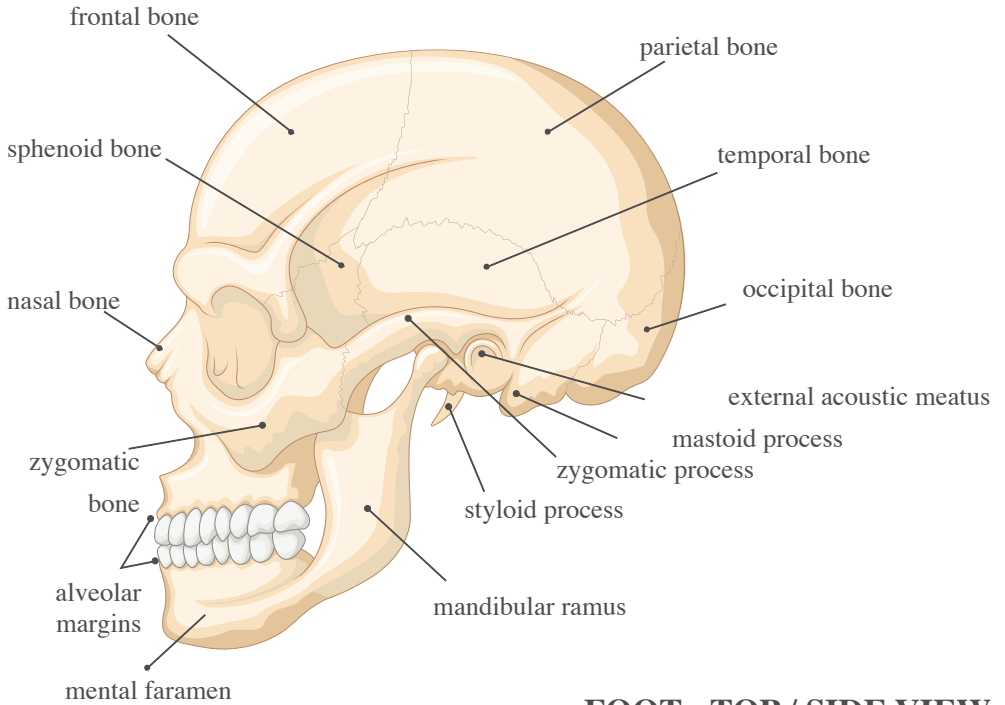
#### SACRUM

pars sacralis  
columnae vertebralis

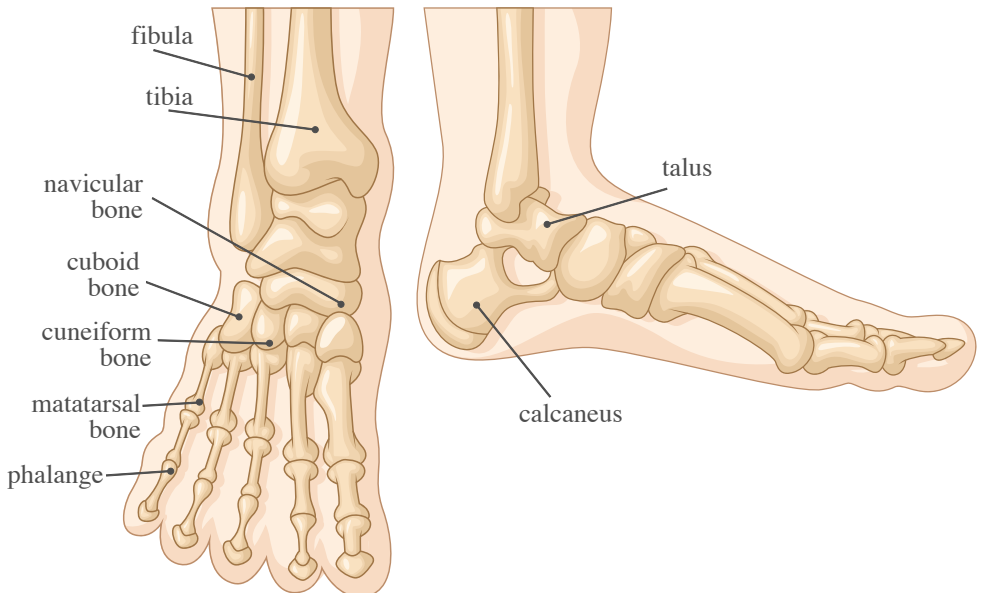
#### TAIL BONE

pars coccygea  
columnae vertebralis

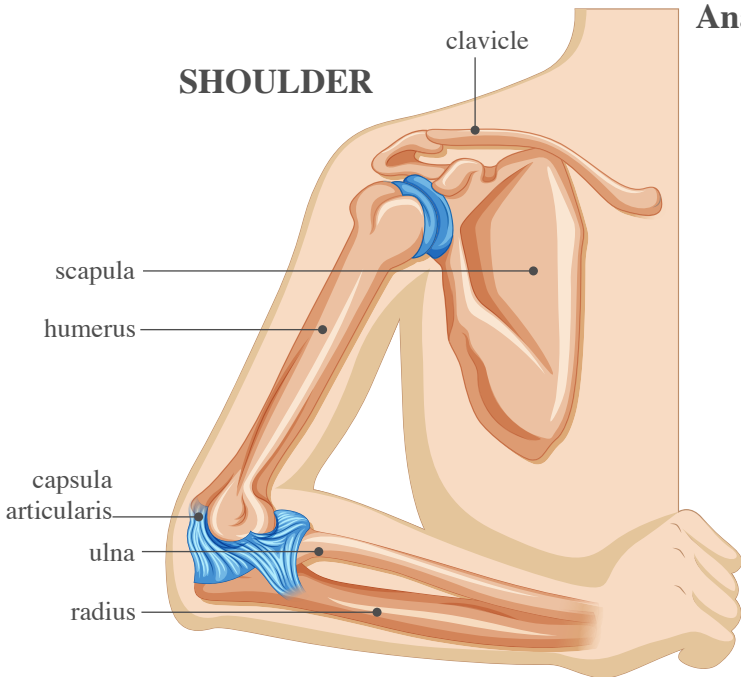
## Anatomical Terms SKULL



## FOOT - TOP / SIDE VIEW



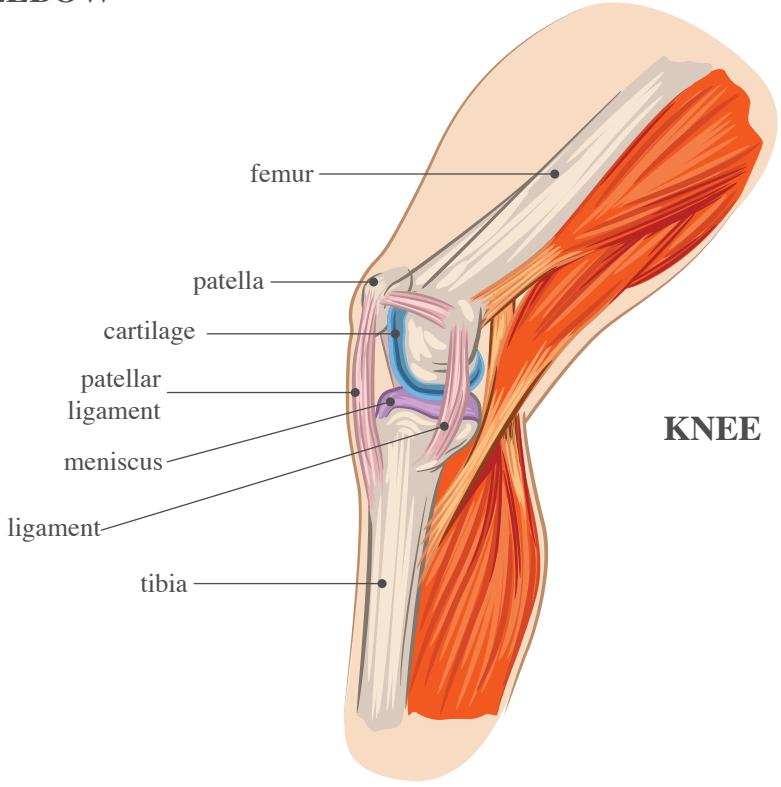
**Anatomical Terms**  
**JOINTS**



**SHOULDER**

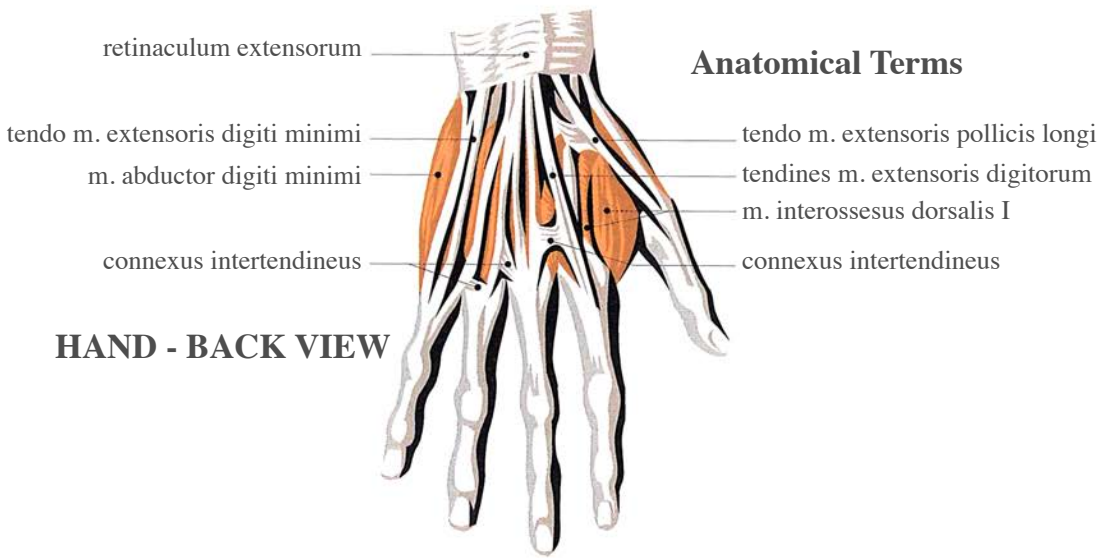
- clavicle
- scapula
- humerus
- capsula articularis
- ulna
- radius

**ELBOW**

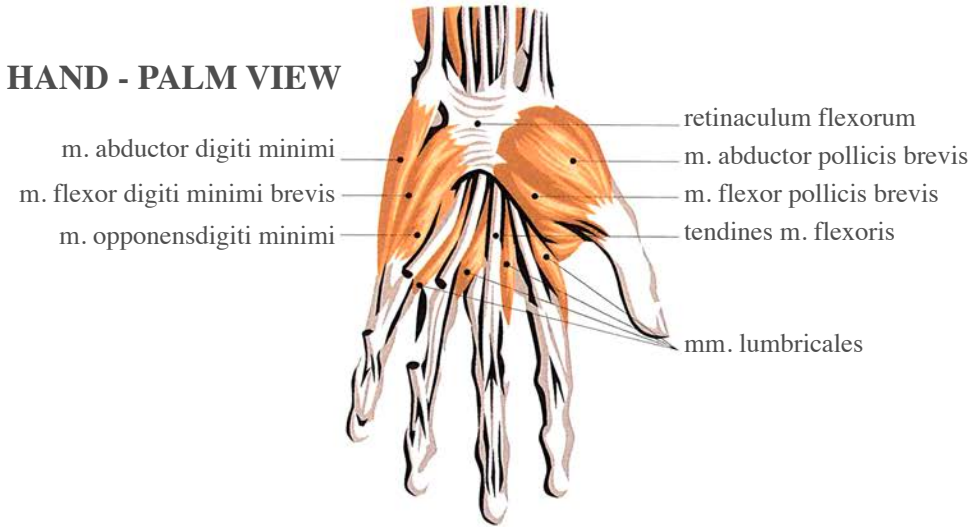


**KNEE**

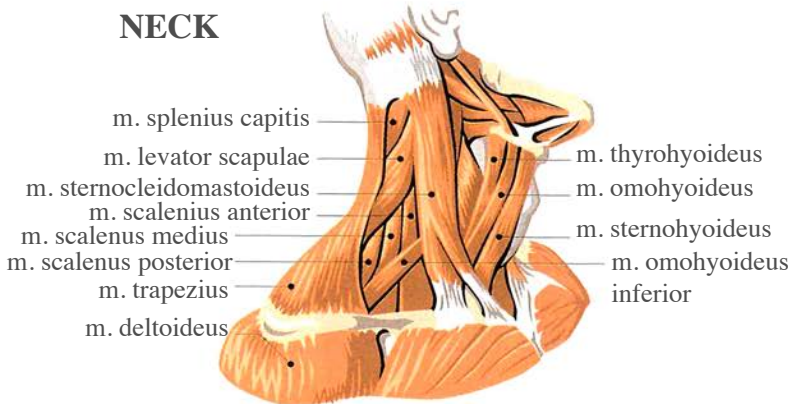
- femur
- patella
- cartilage
- patellar ligament
- meniscus
- ligament
- tibia



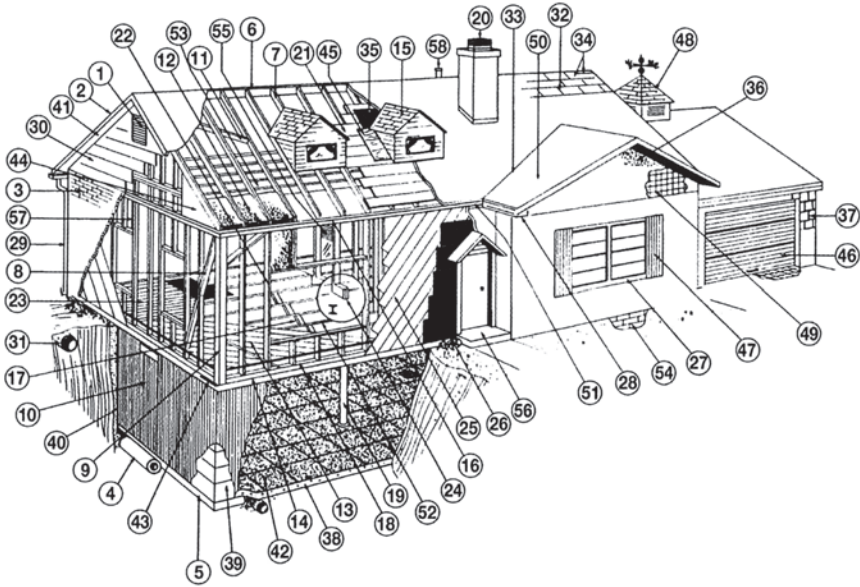
**HAND - BACK VIEW**



**HAND - PALM VIEW**



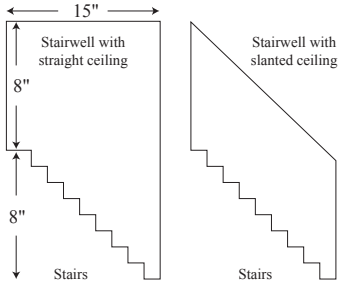
# Residential Construction Details



- |   |                                    |                            |
|---|------------------------------------|----------------------------|
| 1. Louver                                 | 21. Roof Sheathing                 | 40. Gravel                 |
| 2. Eave                                   | 22. Studding                       | 41. Soffit                 |
| 3. Brick Veneer                           | 23. Finished Flooring              | 42. Floor Tile             |
| 4. Drain Tile                             | 24. Girder or I Beam               | 43. Sill Sealer            |
| 5. Footing                                | 25. Sheathing                      | 44. Sheathing Board        |
| 6. Ridge Rafter                           | 26. Building Paper                 | 45. Plywood Roof Sheathing |
| 7. Rafter                                 | 27. Window Sill                    | 46. Overhead Door          |
| 8. Diagonal Bracing                       | 28. Gutter                         | 47. Shutter                |
| 9. Corner Post                            | 29. Downspout or Leader            | 48. Cupola                 |
| 10. Cement Plaster and Foundation Coating | 30. Siding                         | 49. Stucco Mesh or Lath    |
| 11. Collar Beam                           | 31. Storm Sewer                    | 50. Gable Roof             |
| 12. Insulation                            | 32. Shingles                       | 51. Cornice                |
| 13. Sub Flooring                          | 33. Valley                         | 52. Floor Joist            |
| 14. Sill                                  | 34. Ridge                          | 53. Ceiling Joist          |
| 15. Dormer                                | 35. Roofing Felt                   | 54. Area Wall              |
| 16. Plate                                 | 36. Stucco                         | 55. Lath and Plaster       |
| 17. Cross Bridging                        | 37. Wood Shingles                  | 56. Concrete Stoop         |
| 18. Fire Stop                             | 38. Concrete Floor                 | 57. Cripple                |
| 19. Lally Column                          | 39. Masonry or Concrete Foundation | 58. Soil Stack             |
| 20. Chimney                               |                                    |                            |

# How to Estimate Wallpaper on Stairways & Cathedral Walls

When estimating a wall that has a diagonal, remember there will be extra waste to allow for the slope of the steps or the ceiling pitch. There are two different types of stairways to figure: one with a horizontal ceiling line, and the second with a diagonal ceiling line that parallels the fall of the steps.



In both cases, the first step is to divide the wall in either squares or rectangles to determine the square footage. In the figure given above, the upstairs ceiling height is 8", and the downstairs ceiling height is 8". These figures are the length of the wall. Next, measure wall width horizontally from the top of the stairs to an imaginary vertical line originating at the bottom of the stairs, which in the example is 15". Taking the top rectangle, figure 8" x 15" - 120 sq. ft.

Next, figure the bottom rectangle squares, 8" x 15" = 120 square ft., but since a portion of this wall area is under the stairs, multiply the bottom rectangle square footage by 65%, an industry standard. Add the two figures together to arrive at the square feet that needs to be hung with wallcovering. The equation would look as follows:

$$8" \times 15" = 120 \text{ sq. ft (top rectangle)}$$

$$8" \times 15" = 120 \text{ sq. ft} \times 65\% = 78 \text{ sq. ft. (bottom rectangle)}$$

$$120 \text{ sq. ft.} + 78 \text{ sq. ft.} = 198 \text{ sq. ft.}$$

Once you have square footage figured, estimate the amount of wallcoverings just as you would for an ordinary room, finding the usable square feet for the particular pattern from the Usable Yield Chart and then dividing the total square feet by that figure.

For example, if using a wallcovering with repeat of 14", each msr would contain 20 square feet of usable wallcovering. The equation would look as follows: 198 sq. ft. / 20 sq. ft. = 9.9 msr rounded to 10 msr. If the stairway has a sloping ceiling, do as the first example in finding the width and length of the imaginary rectangle or square. The next step is to take both of these rectangles/square figures multiplied by 65% to find the square feet of wall area. The equation would look as follows:

$$8" \times 15" = 120 \text{ sq. ft. (top rectangle)}$$

$$8" \times 15" = 120 \text{ sq. ft. (bottom rectangle)}$$

$$120 \text{ sq. ft.} + 120 \text{ sq. ft.} = 240 \text{ sq. ft.}$$

$$240 \text{ sq. ft.} \times 65\% = 156 \text{ sq. ft. of wall area to be covered}$$

Using the same pattern with a repeat of 14", each msr would contain 20 square feet of usable wallcovering and the equation would look as follows:

$$156 \text{ sq. ft.} / 20 \text{ sq. ft.} = 7.8 \text{ msr rounded to 8 msr}$$

A cathedral ceiling would be estimated the same way, squaring the top rectangle, multiplying the square feet by 65%, then adding that figure to the square feet of the bottom rectangle.

## Metric Single Roll

Repeat Length	Usable Yield
0" to 6"	25 sq. ft.
7" to 12"	22 sq. ft.
13" to 18"	20 sq. ft.
19" to 23"	18 sq. ft.

These figures work for normal size walls. For unusually short (under 3 feet) or high (over 9 feet) they do not apply.

For more info and online estimators visit the source website: [www.wallcoverings.org](http://www.wallcoverings.org)

## Table of Weight and Measure

	To Convert From	Multiply by	To Get	Reverse
<b>Linear</b>	Inches	25.4	Millimeters	0.0394
	Inches	2.54	Centimeters	0.3937
	Inches	0.0833	Feet	12
	Inches	0.0278	Yards	36
	Feet	0.333	Yards	3
	Feet	0.3048	Meters	3.2608
	Miles	5280	Feet	0.000189
	Miles	1.6093	Kilometers	0.6214
<b>Surface</b>	Square Feet	144	Square Inches	0.00694
	Square Yards	9	Square Feet	0.1111
	Square Inches	6.4516	Square Centimeters	0.155
	Square Feet	0.0929	Square Meters	10.764
	Square Yards	0.8361	Square Meters	1.196
	Acres	0.4047	Hectares	2.4711
	Square Miles	2.5898	Square Kilometers	0.3881
<b>Volume</b>	Cubic Inches	0.000579	Cubic Feet	1728
	Cubic Inches	16.387	Cubic Centimeters	0.061
	Cubic Feet	0.037	Cubic Yards	27
	Cubic Feet	0.0283	Liters	0.0353
	Cubic Feet	0.0078	Cords	128
	Cubic Yards	0.7646	Cubic Meters	1.308
	Cubic Yards	764.55	Liters	0.2842
<b>Liquid</b>	Fluid Ounces	0.0625	Pints	16
	Pints	0.5	Quarts	2
	Quarts	0.25	Gallons	4
	Gallons	231	Cubic Inches	0.00433
	Cubic Feet	0.1336	Gallons	7.485
	Fluid Ounces	29.574	Milliliters	0.0338
	Cups	0.2366	Liters	4.2266
	Quarts	0.9464	Liters	1.0567
	Gallons	3.7854	Liters	0.2642
<b>Weight</b>	Ounces	0.0625	Pounds	16
	Ounces	28.35	Grams	0.0353
	Pounds	0.4536	Kilograms	2.2046

## METRIC CONVERSION TABLE

This table is a helpful tool when it is necessary to translate measurements into or out of metric units. To convert a measurement, look for the unit you know in the left-hand column and multiply by the number given in the center column. Your solution will be in the units found in the right-hand column.

WHEN YOU KNOW:	MULTIPLY BY:	TO FIND:
<b>Length and Distance</b>		
Inches (in.)	25	millimeters
feet (ft.)	30	centimeters
yards (yds.)	0.9	meters
miles (mi.)	1.6	kilometers
millimeters (mm)	0.04	inches
centimeters (cm)	0.4	inches
meters (m)	1.1	yards
kilometers	0.6	miles
<b>Surface or Area</b>		
square inches (sq. in.)	6.5	square millimeters
square feet (sq. ft.)	0.09	square meters
square yards (sq. yds.)	0.8	square meters
square miles (sq. mi.)	2.6	square kilometers
acres	0.4	hectares
square centimeters (cm <sup>2</sup> )	0.16	square inches
square meters (m <sup>2</sup> )	1.2	square yards
square kilometers (km <sup>2</sup> )	0.4	square miles
hectares (ha)	2.5	acres
<b>Volume and Capacity (Liquid)</b>		
fluid ounces (fl. oz.)	30	milliliters
pints (pt.)	0.47	liters
quarts (qt.)	0.95	liters
gallons (gal.)	3.8	liters
milliliters (ml)	0.034	fluid ounces
liters (l)	2.1	pints
liters (l)	1.06	quarts
liters (l)	0.26	gallons
<b>Weights and Mass</b>		
ounces (oz.)	28	grams
pounds (lb.)	0.45	kilograms
short tons	0.9	metric tons
grams (g)	0.035	ounces
kilograms (kg)	2.2	pounds
metric tons (t)	1.1	short tons
<b>Temperature</b>		
degrees Fahrenheit (°F)	$\frac{5}{9}$ (after subtracting 32)	degrees Celsius
degrees Celsius (°C)	$\frac{9}{5}$ (add 32)	degrees Fahrenheit

## LENGTH & DISTANCE

Length and distance are measured from one point to another, most commonly in a straight line. The term length usually describes the measurement of an object, while distance generally refers to the measurement of the space between two places or objects. For the purpose of comparison, lengths and distances are given in both customary and metric units below.

<b>Customary</b>		<b>Metric</b>
1 inch (in.)		= 2.54 cm
1 foot (ft.)	= 12 in.	= 30.48 cm
1 yard (yd.)	= 3 ft.	= 0.9144 m
1 mile (mil.)	= 5,280 ft.	= 1,6093 km
<b>Metric</b>		<b>Customary</b>
1 nanometer (nm)		= 0.0000003937 in.
1 micron (̂)	= 1,000 nm	= 0.00003937 in.
1 millimeter (mm)	= 1,000 ̂	= 0.03937 in.
1 centimeter (cm)	= 10 mm	= 0.3937 in.
1 meter (m)	= 100 cm	= 39.37 in.
1 kilometer (km)		= 0.62137 mi.

### NAUTICAL

<b>Customary</b>		<b>Metric</b>
1 fathom	= 6 ft.	= 1.83 m
1 nautical mile	= 6,076.11549 ft.	= 1.8252 km

## SURFACE OR AREA

The area (of land) or surface (of an object) is measured in square units. This measurement is determined by multiplying the length of the area or object by its width. In the customary system the word square (spelled out or abbreviated) is used before the appropriate unit of measurement (inches, feet, etc.). In the metric system, square units are denoted by a small 2, placed to the right and above the abbreviation for the metric unit (cm<sup>2</sup>, m<sup>2</sup>, etc.).

<b>Customary</b>		<b>Metric</b>
1 square inch (sq. in.)		= 6.4516 cm <sup>2</sup>
1 square foot (sq. ft.)	= 144 sq. in.	= 0.0929 m <sup>2</sup>
1 square yard (sq. yd.)	= 9 sq. ft.	= 0.8361 m <sup>2</sup>
1 acre	= 4,840 sq. yd.	= 0.4047 ha
1 square mile (sq. mi.)	= 640 acres	= 258.9988 ha or 2.590 km <sup>2</sup>
<b>Metric</b>		<b>Customary</b>
1 square millimeter (mm <sup>2</sup> )		0.002 sq. in.
1 square centimeter (cm <sup>2</sup> )	= 100 mm <sup>2</sup>	= 0.155 sq. in.
1 square meter (m <sup>2</sup> )	= 10,000 cm <sup>2</sup>	= 1,550 sq. in.
1 square kilometer (km <sup>2</sup> )	= 10,000 m <sup>2</sup>	= 247.105 acres or 0.3861 sq. mi.
1 hectare		= 247.105 acres or 0.3861 sq. mi.

# VOLUME AND CAPACITY

The amount of space occupied by an object is referred to as its volume. Capacity is the amount of a substance that a container can hold. Volume and capacity are achieved by combining length, width, and height and expressed as cubic units. Cubic units do not always contain the word cubic, as in the case of liter and quart. Metric measurements use a small 3, to the right and above the abbreviation of the metric unit to denote a cubic measurement.

## VOLUME MEASUREMENT

### Customary

1 cubic inch (cu. in.)	=	16.387 cm <sup>3</sup>
1 cubic foot (cu. ft.)	=	1,728 cu. in. = 0.0283 m <sup>3</sup>
1 cubic yard (cu. yd.)	=	27 cu. ft. = 0.7646 m <sup>3</sup>

### Metric

### Metric

1 cubic millimeter (cu. mm <sup>3</sup> )	=	1.00006 cu. in.
1 cubic centimeter (cu. cm <sup>3</sup> )	=	0.0610 cu. in.
1 cubic meter (cu. m <sup>3</sup> )	=	1,000,000 cm <sup>3</sup> = 1.308 cu. yd.

### Customary

## METRIC CAPACITY MEASURE

### Metric

1 millimeter (ml)	=	0.0610 cu. in.
1 centimeter (cl)	=	10 ml = 0.6103 cu. in.
1 deciliter (dl)	=	10 cl = 6.1025 cu. in.
1 liter (l)	=	10 dl = 61.025 cu. in. or 1.057 liquid qt. or 0.908 dry qt.

### Customary

## HOUSEHOLD CAPACITY MEASUREMENT

### Customary

1 teaspoon	=	1/6 fl. oz.	=	4.9 ml
1 tablespoon	=	3 teaspoons	=	1/2 fl. oz. = 14.8 ml
1 cup	=	16 tablespoons	=	8 fl. oz. = 236.6 ml
1 pint	=	2 cups	=	16 fl. oz. = 473.2 ml
1 quart	=	2 pints	=	32 fl. oz. = 946.3 ml
1 gallon	=	4 quarts	=	128 fl. oz. = 3.785 l

### Metric

## CUSTOMARY LIQUID CAPACITY MEASUREMENT

### Customary

1 gill (gi.)	=	7.219 cu. in.	=	1.1183 l
1 pint (pt.)	=	4 gi.	=	28.875 cu. in. = 0.4732 l
1 quart (qt.)	=	2 pt.	=	57.75 cu. in. = 0.9463 l
1 gallon (gal.)	=	4 qt.	=	231 cu. in. = 3.7854 l
1 barrel (bbl.), liq.	=	31.5 gal.	=	4.21 cu. ft. = 119.24 l
1 barrel (bbl.), pet.	=	42 gal.	=	5.61 cu. ft. = 158.98 l

### Metric

## CUSTOMARY DRY CAPACITY MEASUREMENT

### Customary

1 pint (pt.)	=	33.600 cu. in.	=	550.61 cm <sup>3</sup>
1 quart (qt.)	=	2 pt.	=	67.20 cu. in. = 1,101.22 cm <sup>3</sup>
1 peck (pk.)	=	8 qt.	=	537.61 cu. in. = 8,809.77 cm <sup>3</sup>
1 bushel (bu.)	=	4 pk.	=	2,150.42 cu. in. = 0.035239 m <sup>3</sup>
1 barrel (bbl.)	=	4.08 cu. ft.	=	0.115627 m <sup>3</sup>

### Metric

## SHIPPING CAPACITY MEASUREMENT

### Customary

1 barrel bulk	=	5 cu. ft.	=	0.1416 m <sup>3</sup>
1 shipping ton, or 1 measurement ton	=	40 cu. ft.	=	1.1327 m <sup>3</sup>
or 1 freight ton	=	35 cu. ft.	=	0.9911 m <sup>3</sup>
1 displacement ton	=	100 cu. ft.	=	2.8317 m <sup>3</sup>
1 register ton	=		=	

### Metric

## WEIGHT AND MASS

Avoirdupois weight measures ordinary materials. The metric system measures mass (amount of material something contains). Mass does not change, but an object's weight decreases with altitude. Mass and weight are equal at sea level, and the comparison's which follow are based on that location.

### AVOIRDUPOIS WEIGHT

		<b>Metric</b>
1 grain (gr.)		= 0.0648 g
1 dram (dr.)	= 27.34375 gr.	= 1.7718 g
1 ounce (oz.)	= 16 dr.	= 28.3495 g
1 pound (lb.)	= 16 oz.	= 453.5924 g. or 0.4536 kg
1 hundred-weight (cwt.)	= 100 lb.	= 45.3592 kg
1 short ton	= 2,000 lb.	= 907.18 kg. or 0.9072 t

### METRIC WEIGHT

		<b>Avoirdupois</b>
1 milligram (mg)		= 0.0154 gr.
1 centigram (cg)	= 10 mg	= 0.1543 gr.
1 decigram (dg)	= 10 cg	= 1.5432 gr.
1 gram (g)	= 10 dg	= 15.4324 gr.
1 dekagram (dag)	= 10 g	= 0.3527 oz.
1 hectogram (hg)	= 10 dag	= 3.5274 oz.
1 kilogram (kg)	= 10 hg	= 2.2046 lb.
1 metric ton (t)	= 1,000 kg	= 2,204.62 lb.

### TROY WEIGHT

Troy weight is used to measure precious metals and gems.

	<b>Avoirdupois</b>	<b>Metric</b>
1 grain (gr.)	= 0.002286 oz.	= 0.0648 g
1 pennyweight (dwt.) = 24 gr.	= 0.054857 oz.	= 1.56 g
1 ounce (oz. t.) = 20 d.w.t.	= 1.0971 oz.	= 31.1035 g
1 pound (lb. t.) = 12 oz. t.	= 13.1657 oz.	= 373.24 g or 0.3732 kg

### DIAMOND WEIGHT

	<b>Avoirdupois</b>	<b>Metric</b>
1 carat	= 0.007 oz.	= 200 mg

### WOOD MEASUREMENT

<b>Customary</b>		<b>Metric</b>
1 board foot (bd. ft.) = 144 cu. in. (1 ft. x 1 ft. x 1 ft.)		= 0.00236 m <sup>3</sup>
1 cord foot (cd. ft.) = 16 cu. ft. (4 ft. x 4 ft. x 1 ft.)		= 0.4531 m <sup>3</sup>
1 cord (cd.) = 8 cd. ft. (4 ft. x 4 ft. x 8 ft.)		= 3.625 m <sup>3</sup>

# MATHEMATICAL FORMULAS

## The Circle:

- Circumference equals diameter times 3.1416 ( $\pi$ )
- Diameter equals circumference divided by 3.1416 or multiplied by .31831
- Radius equals 1/2 diameter
- Area equals radius squared (multiplied by itself) times 3.1416 or diameter squared times .7854

## AREAS OR SURFACES OF OTHER GEOMETRICAL FIGURES

- Square – Length of one side squared.
- Rectangle – Length times width (base times height).
- Rhomboid – (all opposite sides are equal and parallel) Base times height.
- Trapezoid – (only two opposite sides are parallel) Sum of length of the two parallel sides, divided by two, times vertical distance between the parallel sides.
- Triangle – Base times height divided by 2.  
Where height is not known, use Hero's formula. Find "S" as being one half the sum of the length of the three sides. Then deduct the length of each side from the quantity represented by S. Multiply these three quantities by each other, (Side-side 1) times (S-side two) times (S-side three) and multiply the result by the quantity "S" and take the square root of that result.
- Regular Pentagon – Length of one side squared, times 1.72
- Regular Hexagon – length of one side squared, times 2.598
- Regular Octagon – Length of one side squared, times 4.828
- Eclipse – Long diameter times short diameter times .7854
- Sphere – Diameter squared times 3.1416
- Trapeziums and irregular polygons  
Break figure down into triangles and regular polygons, calculate the area of each and add the results.

## VOLUMES

- Cube – (all sides equal) Length of one side cubed. (side X side X side).
- Rectangular prism – Length of base times width of base times height.
- Other prisms – Where top and bottom are parallel and equal in size (rhomboids, trapezoids, regular or irregular polygons, triangles, trapeziums, pentagons, hexagons, octagons), calculate the area of the base and multiply by the height.
- Pyramid – Area of the base times the height divided by three  
(Note: the base can be any regular polygon).
- Cone – Radius of base squared, times 3.1416, times height, divided by 3.
- Sphere – Radius cubed, times 3.1416, times 1.3333.
- Cylinder – Radius squared times 3.1416, times height.
- Elliptical tank – Long diameter of end times short diameter of end, times .7854, times height.

## Braking/Stopping Distances



MPH	Ft./Sec.	Braking Distance	Perception-Reaction Distance	Total Stopping Distance
10	14.7	5	22	27
15	22	11	33	44
20	29.3	19	44	63
25	36	30	55	85
30	44	43	66	109
35	51.3	59	77	136
40	58.7	76	88	164
45	66	97	99	196
50	73.3	119	110	229
55	80.7	144	121	265
60	88	172	132	304
65	95.3	202	143	345
70	102.7	234	154	388
75	110	268	165	433
80	117.3	305	176	481
85	124.7	345	187	532
90	132	386	198	584

Above information based on full braking, on dry, level asphalt, with an average perception-reaction time of 1.5 seconds. Distances in feet.

## QUICK REFERENCE GUIDE

*When possible please call on the companies that support CCAA.*

### INDEX TO SERVICES

#### ADJUSTERS, INDEPENDENT

**Hannaford Claims Service**, 2037 W. Bullard #234, Fresno 93711 . . . . (559) 281-8232

#### APPRAISALS, AUTO PHYSICAL DAMAGE

**Western Appraisers of Fresno**,

P.O. Box 27428, Fresno 93729-7428 . . . . . (559) 299-9241

#### ASBESTOS/LEAD/MOLD ABATEMENT

**Alliance Environmental Group**

Fresno Office . . . . . (559) 475-7267

Corporate Office . . . . . (877) 385-7515

**ALM Environmental**, 1225 Barstow Ave., Clovis 93612 . . . . . (559) 288-0377

**Central Valley Environmental**, 3443 W. Gettysburg, Fresno . . . . . (559) 222-1122

**Crime Scene & Fatality Decontamination** . . . . . (559) 824-4642

**P.W. Stephens** . . . . . (800) 750-7733

#### ASBESTOS/LEAD/MOLD TESTING

**Bovee Environmental Management, Inc.**,

Offices in Fresno, Modesto, Oakdale and Sacramento . . . . . (559) 264-3800

**Dry Creek** . . . . . (559) 400-0214

#### ATTORNEYS

**CARPET CLEANING** (see “Property Damage Restoration & Cleanup”)

#### CONTENTS PACKOUT & INVENTORY

**Blue Kangaroo Packoutz** . . . . . (559) 321-4343

#### CONTRACTORS, GENERAL

**1-800-BOARD UP** . . . . . (800) BOARDUP

**2911 Contractors** . . . . . (559) 765-2911

**Elite Restoration by Villegas** . . . . . (559) 931-9911

**Olsen Construction Restoration**, 2976 N. Argyle, Fresno, CA 93727 . . (559) 266-3473

**Paramount Restoration and Construction** . . . . . (559) 519-6436

**Renaissance General Restoration Contracting, Inc.**, . . . . . (559) 292-2296

**The Restoration Company** . . . . . (559) 374-2600

**Yanez Construction** . . . . . (559) 638-6644

#### CRIME SCENE & FATALITY CLEANUP

**Crime Scene & Fatality Decontamination** . . . . . (559) 824-4642

**SERVPRO of Clovis** . . . . . (559) 765-1100

## QUICK REFERENCE GUIDE

*When possible please call on the companies that support CCAA.*

### DEMOLITION

**Central Valley Environmental**, 3443 W. Gettysburg, Fresno 93722 . . . (559) 222-1122

### EMERGENCY SERVICES / BOARD UP

**1-800-BOARD UP** . . . . . (800) BOARDUP  
**Dry Creek** . . . . . (559) 400-0214  
**Elite Restoration by Villegas** . . . . . (559) 931-9911  
**Olsen Construction Restoration**  
2976 N. Argyle Ave., Fresno, CA 93727 . . . . . (559) 266-3473  
**Paramount Restoration & Construction** . . . . . (559) 519-6436  
**Renaissance General Restoration Contracting, Inc.**, . . . . . (559) 292-2296  
**ServiceMaster by Benevento**, Fresno, Tulare Kings County . . . . . (559) 266-4357  
**SERVPRO of Clovis** . . . . . (559) 765-1100  
**The Garment Restoration Company** . . . . . (877) 835-1005  
**The Restoration Company** . . . . . (559) 374-2600

### ENGINEERS

**Pauli Engineering**, 2501 W. Shaw Ave., Ste. 121, Fresno 93711 . . . . . (559) 237-4408

### FIRE INVESTIGATORS

**Pauli Engineering**, 2501 W. Shaw Ave., Ste. 121, Fresno 93711 . . . . . (559) 237-4408

### FUNERAL SERVICES

**Clovis Funeral Chapel** . . . . . (559) 298-7536

### INSURANCE BROKERS

**Epic Brokers - Patrick McCaleb** . . . . . (559) 451-3190  
**Ortez Insurance Agency** . . . . . (559) 978-3415

### LEAK DETECTION

**City Water Conservation** . . . . . (916) 538-3568

### MEDIATION/ARBITRATION

**Howard R. Broadman** . . . . . (559) 738-1800

### PROPERTY DAMAGE RESTORATION & CLEANUP

**1-800-BOARD UP** . . . . . (800) BOARDUP  
**Brite Restoration Contents** . . . . . (559) 372-2333  
**Carpet CPR** . . . . . (559) 221-0560  
**Elite Restoration by Villegas** . . . . . (559) 931-9911  
**Olsen Construction Restoration**  
2976 N. Argyle Ave., Fresno, CA 93727 . . . . . (559) 266-3473

**QUICK REFERENCE GUIDE**

*When possible please call on the companies that support CCAA.*

- Paramount Restoration and Construction** ..... (559) 519-6436
- Renaissance General Restoration Contracting, Inc.,** ..... (559) 292-2296
- ServiceMaster by Benevento, Fresno, Tulare Kings County** ..... (559) 266-4357
- SERVPRO of Clovis** ..... (559) 765-1100
- The Restoration Company** ..... (559) 374-2600

**RESTORATION DRY CLEANING**

- The Garment Restoration Company** ..... (877) 835-1005
- Brite Restoration Content** ..... (559) 372-2333

**INDEX TO ADVERTISERS**

*See also "Quick Reference Guide"*

**1-800-Board Up** . . . . . (p. 4)

**2911 Contractors** . . . . . (p. 24)

**Alliance** . . . . . Fresno (p. 16)

**ALM Environmental** . . . . . Fresno (p. 6)

**Blue Kangaroo Packoutz** . . . . . (p. 18)

**Bovee Environmental Management, Inc.** . . . . . Fresno, Modesto (inside back cover)

**Brite Restoration Content** . . . . . (p. 66)

**Central Valley Environmental (CVE)** . . . . . (p. 14)

**City Water Conservation** . . . . . (p. 22)

**Clovis Funeral Chapel** . . . . . (p. 24)

**Crime Scene & Fatality Decontamination** . . . . . Central California (p. 14)

**Dry Creek** . . . . . (p. 32)

**Elite Restoration by Villegas** . . . . . Fresno (p. 28)

**Enterprise Rent-a-Car** . . . . . Fresno (p. 39)

**Epic Insurance Brokers** . . . . . (p. 22)

**ERC - Electronics Restoration** . . . . . (p. 8)

**Garment Restoration Company** . . . . . (p. 8)

**Hannaford Claims Service** . . . . . Fresno (p. 10)

**Olsen Construction** . . . . . Fresno (p. 2)

**Ortez Insurance Agency** . . . . . Merced (p. 24)

**INDEX TO ADVERTISERS**

*See also "Quick Reference Guide"*

- P.W. Stephens** ..... (p. 18)
- Paramount Restoration** ..... Fresno, Madera, Tulare (p. 12)
- Pauli Engineering** ..... Fresno (p. 20)
  
- Renaissance** ..... Fresno (p. 4)
- RestoreTech Inc.**..... Fresno (p. 10)
  
- ServiceMaster by Benevento** ..... Visalia (back cover)
- SERVPRO** ..... Clovis (p. 22)
  
- Western Appraisers of Fresno** ..... Fresno (p. 8)
  
- Yanez Construction**.....(inside front cover)

2  
0  
2  
6

**January**

SU	MO	TU	WE	TH	FR	SA
			1	2	3	
4	5	6	7	8	9	10
11	12	13	14	15	16	17
18	19	20	21	22	23	24
25	26	27	28	29	30	31

**February**

SU	MO	TU	WE	TH	FR	SA
1	2	3	4	5	6	7
8	9	10	11	12	13	14
15	16	17	18	19	20	21
22	23	24	25	26	27	28

**March**

SU	MO	TU	WE	TH	FR	SA
1	2	3	4	5	6	7
8	9	10	11	12	13	14
15	16	17	18	19	20	21
22	23	24	25	26	27	28
29	30	31				

**April**

SU	MO	TU	WE	TH	FR	SA
			1	2	3	4
5	6	7	8	9	10	11
12	13	14	15	16	17	18
19	20	21	22	23	24	25
26	27	28	29	30		

**May**

SU	MO	TU	WE	TH	FR	SA
					1	2
3	4	5	6	7	8	9
10	11	12	13	14	15	16
17	18	19	20	21	22	23
24	25	26	27	28	29	30
31						

**June**

SU	MO	TU	WE	TH	FR	SA
	1	2	3	4	5	6
7	8	9	10	11	12	13
14	15	16	17	18	19	20
21	22	23	24	25	26	27
28	29	30				

**July**

SU	MO	TU	WE	TH	FR	SA
			1	2	3	4
5	6	7	8	9	10	11
12	13	14	15	16	17	18
19	20	21	22	23	24	25
26	27	28	29	30	31	

**August**

SU	MO	TU	WE	TH	FR	SA
					1	
2	3	4	5	6	7	8
9	10	11	12	13	14	15
16	17	18	19	20	21	22
23	24	25	26	27	28	29
30	31					

**September**

SU	MO	TU	WE	TH	FR	SA
		1	2	3	4	5
6	7	8	9	10	11	12
13	14	15	16	17	18	19
20	21	22	23	24	25	26
27	28	29	30			

**October**

SU	MO	TU	WE	TH	FR	SA
			1	2	3	
4	5	6	7	8	9	10
11	12	13	14	15	16	17
18	19	20	21	22	23	24
25	26	27	28	29	30	31

**November**

SU	MO	TU	WE	TH	FR	SA
1	2	3	4	5	6	7
8	9	10	11	12	13	14
15	16	17	18	19	20	21
22	23	24	25	26	27	28
29	30					

**December**

SU	MO	TU	WE	TH	FR	SA
		1	2	3	4	5
6	7	8	9	10	11	12
13	14	15	16	17	18	19
20	21	22	23	24	25	26
27	28	29	30	31		



Website QR Code

We specialize in fire, smoke and water contents. What exactly do we do?

- Pack-out
- Move-back
- Contents cleaning
- Odor Stabilization
- Total Loss Inventory

Covering Costal areas, Madera to Bakerfield and all the in between.

Call us on your next project.

**(559) 372- 2333**

**Admin@BriteRestoration.com**



For a **BRITE** ending.



BOVEE ENVIRONMENTAL MANAGEMENT INC.

## ENVIRONMENTAL CONSULTING SERVICES

*Inspecting for:*

- |  |   |
|--|---|
| <input checked="" type="checkbox"/> Asbestos | <input checked="" type="checkbox"/> Bacteria  |
| <input checked="" type="checkbox"/> Lead     | <input checked="" type="checkbox"/> Mercury   |
| <input checked="" type="checkbox"/> Mold     | <input checked="" type="checkbox"/> PCBs      |
| <input checked="" type="checkbox"/> Meth     | <input checked="" type="checkbox"/> CBP-Smoke |

*and more!*

INSPECTING CALIFORNIA SINCE 1997

**CALL  
US**

**Contact us before your next  
renovation or demolition  
project**

[bem@boveeinc.com](mailto:bem@boveeinc.com)

**833-643-3800**



ServiceMaster by Benevento



**RESTORING PROPERTY  
AND PEACE OF MIND.**

[servicemasterbybenevento.com](http://servicemasterbybenevento.com) | 559-266-4357